

## TUT7 Rabbit Polyclonal Antibody

### Description

|                         |   |
|-------------------------|---|
| Product type            | Primary Antibody                            |
| Code                    | BT-AP05329                                  |
| Host                    | Rabbit                                      |
| Isotype                 | IgG   |
| Size                    | 20ul, 50ul, 100ul                           |
| Immunogen               | Synthesized peptide derived from human TUT7 |
| Mol wt                  | 164450                                      |
| Species reactivity      | Human, Mouse                                |
| Clonality               | Polyclonal                                  |
| Recommended application | WB  |
| Concentration           | 1 mg/ml                                     |
| Full name               | TUT7  |
| Synonyms                | TUT7  |

This product is for research use only, not for use in human, therapeutic or diagnostic procedure.

### Background

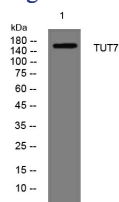
N/A

### Recommended Dilution

WB: 1: 500 - 1: 2000

Not yet tested in other applications.

### Images



Western blot analysis of lysates from HpeG2 cells, primary antibody was diluted at 1:1000, 4°C overnight

### Storage

-20°C for 1 year

501 Changsheng S Rd, Nanhu Dist, Jiaxing, Zhejiang, China

Tel: 86 21 31007137 | E-mail: [save@bt-laboratory.com](mailto:save@bt-laboratory.com) | [www.bt-laboratory.com](http://www.bt-laboratory.com)