

## Meis1 Polyclonal Antibody

### Description

Product type	Primary Antibody
Code	BT-AP05331
Host	Rabbit
Isotype	IgG
Size	20ul, 50ul, 100ul
Immunogen	The antiserum was produced against synthesized peptide derived from human Meis1. AA range:229-278
Mol wt	43016
Species reactivity	Human, Mouse
Clonality	Polyclonal
Recommended application	WB, ELISA
Concentration	1 mg/ml
Full name	Meis1 Antibody
Synonyms	MEIS1; Homeobox protein Meis1

This product is for research use only, not for use in human, therapeutic or diagnostic procedure.

### Background

Homeobox genes, of which the most well-characterized category is represented by the HOX genes, play a crucial role in normal development. In addition, several homeoproteins are involved in neoplasia. MEIS1 encodes a homeobox protein belonging to the TALE (three amino acid loop extension) family of homeodomain-containing proteins.

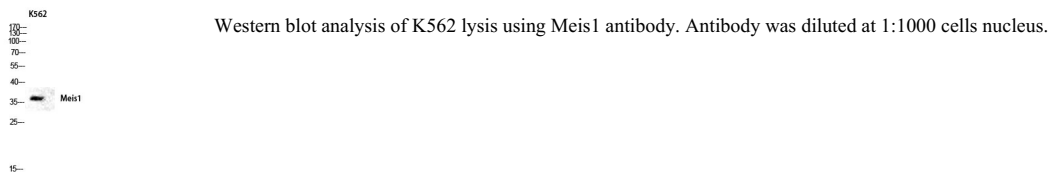
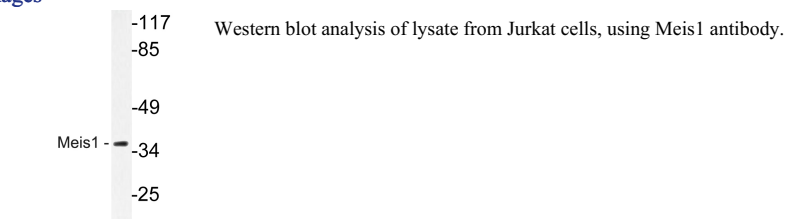
### Recommended Dilution

WB: 1: 500 - 1: 2000

ELISA: 1: 40000

Not yet tested in other applications.

### Images



### Storage

-20°C for one year

