

## MLH1 Polyclonal Antibody

### Description

<b>Product type</b>	Primary Antibody
<b>Code</b>	BT-AP05452
<b>Host</b>	Rabbit
<b>Isotype</b>	IgG
<b>Size</b>	20ul, 50ul, 100ul
<b>Immunogen</b>	The antiserum was produced against synthesized peptide derived from human MLH1. AA range:441-490
<b>Mol wt</b>	84601
<b>Species reactivity</b>	Human, Mouse, Rat
<b>Clonality</b>	Polyclonal
<b>Recommended application</b>	WB, IF, ELISA
<b>Concentration</b>	1 mg/ml
<b>Full name</b>	MLH1 Antibody
<b>Synonyms</b>	MLH1; COCA2; DNA mismatch repair protein Mlh1; MutL protein homolog 1

This product is for research use only, not for use in human, therapeutic or diagnostic procedure.

### Background

MLH1 was identified as a locus frequently mutated in hereditary nonpolyposis colon cancer (HNPCC). It is a human homolog of the E.coli DNA mismatch repair gene mutL, consistent with the characteristic alterations in microsatellite sequences (RER+phenotype) found in HNPCC. Alternative splicing results in multiple transcript variants encoding distinct isoforms. Additional transcript variants have been described, but their full-length natures have not been determined.

### Recommended Dilution

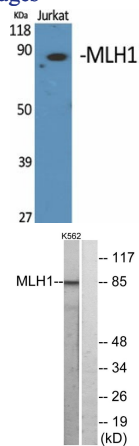
WB: 1: 500 - 1: 2000

IF: 1: 200 - 1: 1000

ELISA: 1: 20000

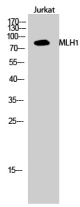
Not yet tested in other applications.

### Images



Western Blot analysis of various cells using MLH1 Polyclonal Antibody cells nucleus.

Western blot analysis of lysates from K562 cells, using MLH1 Antibody. The lane on the right is blocked with the synthesized peptide.



Western Blot analysis of Jurkat cells using MLH1 Polyclonal Antibody cells nucleus.

### Storage

-20°C for one year

501 Changsheng S Rd, Nanhu Dist, Jiaxing, Zhejiang, China

Tel: 86 21 31007137 | E-mail: [save@bt-laboratory.com](mailto:save@bt-laboratory.com) | [www.bt-laboratory.com](http://www.bt-laboratory.com)