

MLTK Polyclonal Antibody

Description

Product type	Primary Antibody
Code	BT-AP05467
Host	Rabbit
Isotype	IgG
Size	20ul, 50ul, 100ul
Immunogen	The antiserum was produced against synthesized peptide derived from human MLTK. AA range:701-750
Mol wt	91181
Species reactivity	Human, Mouse
Clonality	Polyclonal
Recommended application	WB, IF, ELISA
Concentration	1 mg/ml
Full name	MLTK Antibody
Synonyms	MLTK; ZAK; HCCS4; Mitogen-activated protein kinase kinase kinase MLT; Human cervical cancer suppressor gene 4 protein; HCCS-4; Leucine zipper- and sterile alpha motif-containing kinase; MLK-like mitog

This product is for research use only, not for use in human, therapeutic or diagnostic procedure.

Background

MLTK is a member of the MAPKKK family of signal transduction molecules and encodes a protein, Mitogen-activated protein kinase kinase kinase MLT, with an N-terminal kinase catalytic domain, followed by a leucine zipper motif and a sterile-alpha motif (SAM). This magnesium-binding protein forms homodimers and is located in the cytoplasm. The protein mediates gamma radiation signaling leading to cell cycle arrest and activity of this protein plays a role in cell cycle checkpoint regulation in cells. The protein also has pro-apoptotic activity. Alternate transcriptional splice variants, encoding different isoforms, have been characterized.

Recommended Dilution

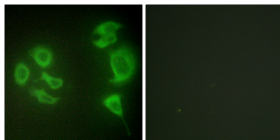
WB: 1: 500 - 1: 2000

IF: 1: 200 - 1: 1000

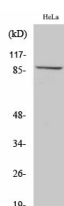
ELISA: 1: 20000

Not yet tested in other applications.

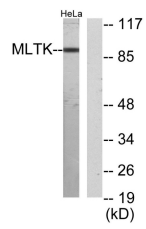
Images



Immunofluorescence analysis of HepG2 cells, using MLTK Antibody. The picture on the right is blocked with the synthesized peptide.



Western Blot analysis of various cells using MLTK Polyclonal Antibody diluted at 1:1000



Western blot analysis of lysates from HeLa cells, using MLTK Antibody. The lane on the right is blocked with the synthesized peptide.

Storage

-20°C for one year

501 Changsheng S Rd, Nanhu Dist, Jiaxing, Zhejiang, China

Tel: 86 21 31007137 | E-mail: save@bt-laboratory.com | www.bt-laboratory.com