

MRP7 Polyclonal Antibody

Description

Product type	Primary Antibody
Code	BT-AP05567
Host	Rabbit
Isotype	IgG
Size	20ul, 50ul, 100ul
Immunogen	The antiserum was produced against synthesized peptide derived from human MRP7. AA range:835-884
Mol wt	161629
Species reactivity	Human, Monkey
Clonality	Polyclonal
Recommended application	WB, ELISA
Concentration	1 mg/ml
Full name	MRP7 Antibody
Synonyms	ABCC10; MRP7; SIMRP7; Multidrug resistance-associated protein 7; ATP-binding cassette sub-family C member 10

This product is for research use only, not for use in human, therapeutic or diagnostic procedure.

Background

Multidrug resistance-associated protein 7 (ATP binding cassette subfamily C member 10) encoded by ABCC10 is a member of the superfamily of ATP-binding cassette (ABC) transporters. ABC proteins transport various molecules across extra- and intra-cellular membranes. ABC genes are divided into seven distinct subfamilies (ABC1, MDR/TAP, MRP, ALD, OABP, GCN20, and White). This ABC full-transporter is a member of the MRP subfamily which is involved in multi-drug resistance. Multiple transcript variants encoding different isoforms have been found for this gene.

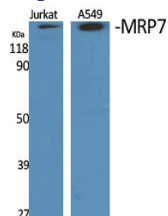
Recommended Dilution

WB: 1: 500 - 1: 2000

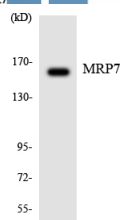
ELISA: 1: 40000

Not yet tested in other applications.

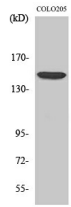
Images



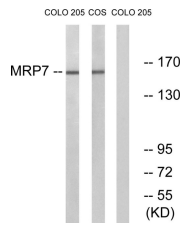
Western Blot analysis of various cells using MRP7 Polyclonal Antibody diluted at 1:1000



Western blot analysis of the lysates from HepG2 cells using MRP7 antibody.



Western Blot analysis of COS7 cells using MRP7 Polyclonal Antibody diluted at 1:1000



Western blot analysis of lysates from COLO and COS7 cells, using MRP7 Antibody. The lane on the right is blocked with the synthesized peptide.

Storage

-20°C for one year

501 Changsheng S Rd, Nanhu Dist, Jiaxing, Zhejiang, China

Tel: 86 21 31007137 | E-mail: save@bt-laboratory.com | www.bt-laboratory.com