

MRP-L14 Polyclonal Antibody

Description

| | |
|--------------------------------|--|
| Product type | Primary Antibody |
| Code | BT-AP05572 |
| Host | Rabbit |
| Isotype | IgG |
| Size | 20ul, 50ul, 100ul |
| Immunogen | The antiserum was produced against synthesized peptide derived from human MRPL14. AA range:96-145 |
| Mol wt | 15948 |
| Species reactivity | Human, Mouse, Rat |
| Clonality | Polyclonal |
| Recommended application | WB, IHC-p, ELISA |
| Concentration | 1 mg/ml |
| Full name | MRP-L14 Antibody |
| Synonyms | MRPL14; MRPL32; RPML32; 39S ribosomal protein L14; mitochondrial; L14mt; MRP-L14; 39S ribosomal protein L32, mitochondrial; L32mt; MRP-L32 |

This product is for research use only, not for use in human, therapeutic or diagnostic procedure.

Background

Nuclear gene MRPL14 encodes 39S ribosomal protein L14 mitochondrial component of the 39S subunit of the mitochondrial ribosome. A pseudogene of MRPL14 is found on chromosome 17.

Recommended Dilution

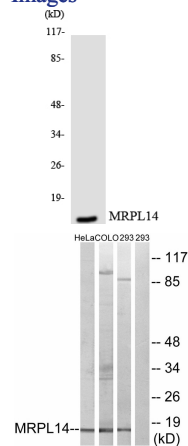
WB: 1: 500 - 1: 2000

IHC: 1: 100 - 1: 300

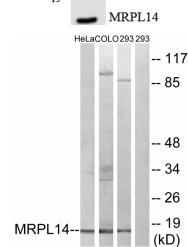
ELISA: 1: 20000

Not yet tested in other applications.

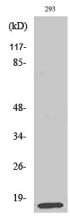
Images



Western blot analysis of the lysates from HUVEC cells using MRPL14 antibody.



Western blot analysis of lysates from 293, HeLa, and COLO cells, using MRPL14 Antibody. The lane on the right is blocked with the synthesized peptide.



Western Blot analysis of various cells using MRP-L14 Polyclonal Antibody diluted at 1:2000

Storage

-20°C for one year

501 Changsheng S Rd, Nanhu Dist, Jiaxing, Zhejiang, China

Tel: 86 21 31007137 | E-mail: save@bt-laboratory.com | www.bt-laboratory.com