

Myf-5 Polyclonal Antibody

Description

Product type	Primary Antibody
Code	BT-AP05685
Host	Rabbit
Isotype	IgG
Size	20ul, 50ul, 100ul
Immunogen	The antiserum was produced against synthesized peptide derived from human MYF5. AA range:61-110
Mol wt	28381
Species reactivity	Human, Mouse
Clonality	Polyclonal
Recommended application	WB, ELISA
Concentration	1 mg/ml
Full name	Myf-5 Antibody
Synonyms	MYF5; BHLHC2; Myogenic factor 5; Myf-5; Class C basic helix-loop-helix protein 2; BHLHc2

This product is for research use only, not for use in human, therapeutic or diagnostic procedure.

Background

MYF5 is a Protein Coding gene. Myogenic Factor 5 acts as a transcriptional activator that promotes transcription of muscle-specific target genes and plays a role in muscle differentiation. Together with MYOG and MYOD1, co-occupies muscle-specific gene promoter core region during myogenesis. Induces fibroblasts to differentiate into myoblasts. Probable sequence specific DNA-binding protein. Diseases associated with MYF5 include skeletal muscle cancer and botryoid rhabdomyosarcoma. Among its related pathways are Developmental Biology and CDO in myogenesis. Gene Ontology (GO) annotations related to this gene include sequence-specific DNA binding and RNA polymerase II core promoter proximal region sequence-specific DNA binding. An important paralog of this gene is MYOD1.

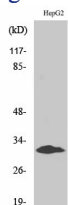
Recommended Dilution

WB: 1: 500 - 1: 2000

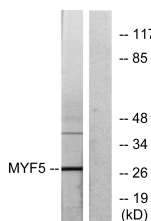
ELISA: 1: 40000

Not yet tested in other applications.

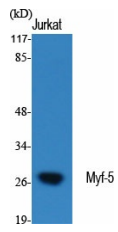
Images



Western Blot analysis of HepG2 cells using Myf-5 Polyclonal Antibody cells nucleus.



Western blot analysis of lysates from HepG2 cells, using MYF5 Antibody. The lane on the right is blocked with the synthesized peptide.



Western Blot analysis of various cells using Myf-5 Polyclonal Antibody cells nucleus.

Storage

-20°C for one year

501 Changsheng S Rd, Nanhu Dist, Jiaxing, Zhejiang, China

Tel: 86 21 31007137 | E-mail: save@bt-laboratory.com | www.bt-laboratory.com