

## Myt 1 Polyclonal Antibody

### Description

<b>Product type</b>	Primary Antibody
<b>Code</b>	BT-AP05744
<b>Host</b>	Rabbit
<b>Isotype</b>	IgG
<b>Size</b>	20ul, 50ul, 100ul
<b>Immunogen</b>	The antiserum was produced against synthesized peptide derived from human PKMYT1. AA range:49-98
<b>Mol wt</b>	54521
<b>Species reactivity</b>	Human
<b>Clonality</b>	Polyclonal
<b>Recommended application</b>	WB, IHC-p, ELISA
<b>Concentration</b>	1 mg/ml
<b>Full name</b>	Myt 1 Antibody
<b>Synonyms</b>	PKMYT1; MYT1; Membrane-associated tyrosine- and threonine-specific cdc2-inhibitory kinase; Myt1 kinase

This product is for research use only, not for use in human, therapeutic or diagnostic procedure.

### Background

PKMYT1 encodes a member of the serine/threonine protein kinase family. Membrane-associated tyrosine- and threonine-specific cdc2-inhibitory kinase is a membrane-associated kinase that negatively regulates the G2/M transition of the cell cycle by phosphorylating and inactivating cyclin-dependent kinase 1. The activity of the encoded protein is regulated by polo-like kinase 1. Alternatively spliced transcript variants encoding multiple isoforms have been observed for this gene.

### Recommended Dilution

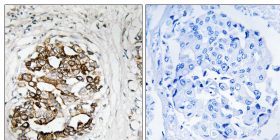
WB: 1: 500 - 1: 2000

IHC: 1: 100 - 1: 300

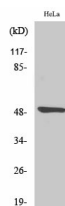
ELISA: 1: 20000

Not yet tested in other applications.

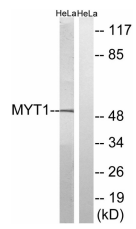
### Images



Immunohistochemistry analysis of paraffin-embedded human breast carcinoma, using MYT1 Antibody. The picture on the right is blocked with the synthesized peptide.



Western Blot analysis of various cells using Myt 1 Polyclonal Antibody diluted at 1:2000



Western blot analysis of lysates from HeLa cells, using MYT1 Antibody. The lane on the right is blocked with the synthesized peptide.

### Storage

-20°C for one year

501 Changsheng S Rd, Nanhu Dist, Jiaxing, Zhejiang, China

Tel: 86 21 31007137 | E-mail: [save@bt-laboratory.com](mailto:save@bt-laboratory.com) | [www.bt-laboratory.com](http://www.bt-laboratory.com)