

N4BP1 Polyclonal Antibody

Description

Product type	Primary Antibody
Code	BT-AP05751
Host	Rabbit
Isotype	IgG
Size	20ul, 50ul, 100ul
Immunogen	The antiserum was produced against synthesized peptide derived from human N4BP1. AA range:383-432
Mol wt	100409
Species reactivity	Human
Clonality	Polyclonal
Recommended application	WB, IHC-p, ELISA
Concentration	1 mg/ml
Full name	N4BP1 Antibody
Synonyms	N4BP1; KIAA0615; NEDD4-binding protein 1; N4BP1

This product is for research use only, not for use in human, therapeutic or diagnostic procedure.

Background

N4BP1 is a Protein Coding gene. NEDD4 Binding Protein 1 is a inhibitor of the E3 ubiquitin-protein ligase ITCH. Acts by interacting with the second WW domain of ITCH, leading to compete with ITCHs substrates and impairing ubiquitination of substrates. Gene Ontology (GO) annotations related to this gene include RNA binding. An important paralog of this gene is ZC3H12C.

Recommended Dilution

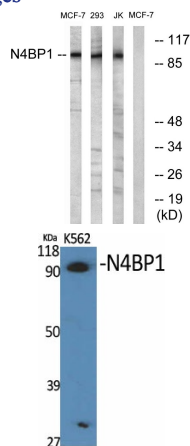
WB: 1: 500 - 1: 2000

IHC: 1: 100 - 1: 300

ELISA: 1: 40000

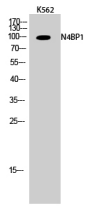
Not yet tested in other applications.

Images

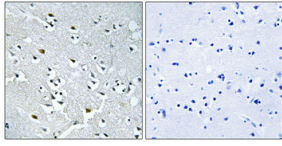


Western blot analysis of lysates from MCF-7 and Jurkat/293 cells, using N4BP1 Antibody. The lane on the right is blocked with the synthesized peptide.

Western Blot analysis of various cells using N4BP1 Polyclonal Antibody cells nucleus.



Western Blot analysis of K562 cells using N4BP1 Polyclonal Antibody cells nucleus.



Immunohistochemical analysis of paraffin-embedded Human brain. Antibody was diluted at 1:100(4° overnight). High-pressure and temperature Tris-EDTA,pH8.0 was used for antigen retrieval. Negative contrl (right) obtaned from antibody was pre-absorbed by immunogen peptide.

Storage

-20°C for one year

501 Changsheng S Rd, Nanhu Dist, Jiaxing, Zhejiang, China

Tel: 86 21 31007137 | E-mail: save@bt-laboratory.com | www.bt-laboratory.com