

## NARG1 Polyclonal Antibody

### Description

<b>Product type</b>	Primary Antibody
<b>Code</b>	BT-AP05782
<b>Host</b>	Rabbit
<b>Isotype</b>	IgG
<b>Size</b>	20ul, 50ul, 100ul
<b>Immunogen</b>	The antiserum was produced against synthesized peptide derived from human NARG1. AA range:221-270
<b>Mol wt</b>	101272
<b>Species reactivity</b>	Human, Mouse
<b>Clonality</b>	Polyclonal
<b>Recommended application</b>	WB, IHC-p, IF, ELISA
<b>Concentration</b>	1 mg/ml
<b>Full name</b>	NARG1 Antibody
<b>Synonyms</b>	NAA15; GA19; NARG1; NATH; TBDN100; N-alpha-acetyltransferase 15; NatA auxiliary subunit; Gastric cancer antigen Ga19; N-terminal acetyltransferase; NMDA receptor-regulated protein 1; Protein tubedown

**This product is for research use only, not for use in human, therapeutic or diagnostic procedure.**

### Background

NAA15 is a Protein Coding gene. Auxillary subunit of the N-terminal acetyltransferase A (NatA) complex which displays alpha (N-terminal) acetyltransferase activity. The NAT activity may be important for vascular, hematopoietic and neuronal growth and development. Required to control retinal neovascularization in adult ocular endothelial cells. In complex with XRCC6 and XRCC5 (Ku80), up-regulates transcription from the osteocalcin promoter. Diseases associated with NAA15 include n-terminal acetyltransferase deficiency and gastric cancer. Gene Ontology (GO) annotations related to this gene include poly(A) RNA binding and N-acetyltransferase activity. An important paralog of this gene is NAA16.

### Recommended Dilution

WB: 1: 500 - 1: 2000

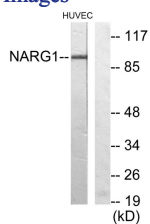
IHC: 1: 100 - 1: 300

IF: 1: 200 - 1: 1000

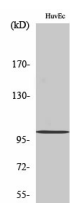
ELISA: 1: 20000

Not yet tested in other applications.

### Images



Western blot analysis of lysates from HUVEC cells, using NARG1 Antibody. The lane on the right is blocked with the synthesized peptide.



Western Blot analysis of various cells using NARG1 Polyclonal Antibody

## Storage

-20°C for one year

501 Changsheng S Rd, Nanhu Dist, Jiaxing, Zhejiang, China

Tel: 86 21 31007137 | E-mail: [save@bt-laboratory.com](mailto:save@bt-laboratory.com) | [www.bt-laboratory.com](http://www.bt-laboratory.com)