

## NCX1 Polyclonal Antibody

### Description

Product type	Primary Antibody
Code	BT-AP05816
Host	Rabbit
Isotype	IgG
Size	20ul, 50ul, 100ul
Immunogen	Synthesized peptide derived from NCX1 . at AA range: 270-350
Mol wt	108547
Species reactivity	Human, Mouse, Rat
Clonality	Polyclonal
Recommended application	WB, ELISA
Concentration	1 mg/ml
Full name	NCX1 Antibody
Synonyms	SLC8A1; CNC; NCX1; Sodium/calcium exchanger 1; Na(+)/Ca(2+)-exchange protein 1

This product is for research use only, not for use in human, therapeutic or diagnostic procedure.

### Background

In cardiac myocytes, Ca(2+) concentrations alternate between high levels during contraction and low levels during relaxation. The increase in Ca(2+) concentration during contraction is primarily due to release of Ca(2+) from intracellular stores. However, some Ca(2+) also enters the cell through the sarcolemma (plasma membrane). During relaxation, Ca(2+) is sequestered within the intracellular stores. To prevent overloading of intracellular stores, the Ca(2+) that entered across the sarcolemma must be extruded from the cell. The Na(+)-Ca(2+) exchanger is the primary mechanism by which the Ca(2+) is extruded from the cell during relaxation. In the heart, the exchanger may play a key role in digitalis action. The exchanger is the dominant mechanism in returning the cardiac myocyte to its resting state following excitation.

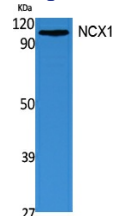
### Recommended Dilution

WB: 1: 500 - 1: 2000

ELISA: 1: 5000

Not yet tested in other applications.

### Images



Western Blot analysis of extracts from 293 cells, using NCX1 Polyclonal Antibody. Secondary antibody was diluted at 1:20000

### Storage

-20°C for one year