

NEIL3 Polyclonal Antibody

Description

Product type	Primary Antibody
Code	BT-AP05878
Host	Rabbit
Isotype	IgG
Size	20ul, 50ul, 100ul
Immunogen	The antiserum was produced against synthesized peptide derived from human NEIL3. AA range:491-540
Mol wt	67893
Species reactivity	Human, Mouse
Clonality	Polyclonal
Recommended application	WB, IHC-p, ELISA
Concentration	1 mg/ml
Full name	NEIL3 Antibody
Synonyms	NEIL3; Endonuclease 8-like 3; DNA glycosylase FPG2; DNA glycosylase/AP lyase Neil3; Endonuclease VIII-like 3; Nei-like protein 3

This product is for research use only, not for use in human, therapeutic or diagnostic procedure.

Background

NEIL3 belongs to a class of DNA glycosylases homologous to the bacterial Fpg/Nei family. These glycosylases initiate the first step in base excision repair by cleaving bases damaged by reactive oxygen species and introducing a DNA strand break via the associated lyase reaction.

Recommended Dilution

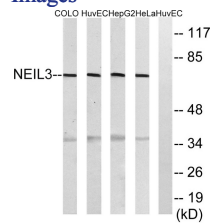
WB: 1: 500 - 1: 2000

IHC: 1: 100 - 1: 300

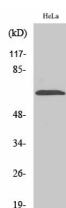
ELISA: 1: 40000

Not yet tested in other applications.

Images



Western blot analysis of lysates from HeLa, HepG2, HUVEC, and COLO cells, using NEIL3 Antibody. The lane on the right is blocked with the synthesized peptide.



Western blot analysis of various cells using NEIL3 Polyclonal Antibody diluted at 1:2000 cells nucleus.

Storage

-20°C for one year

501 Changsheng S Rd, Nanhu Dist, Jiaxing, Zhejiang, China

Tel: 86 21 31007137 | E-mail: save@bt-laboratory.com | www.bt-laboratory.com