

Nkx-6.1 Polyclonal Antibody

Description

Product type	Primary Antibody
Code	BT-AP06057
Host	Rabbit
Isotype	IgG
Size	20ul, 50ul, 100ul
Immunogen	Synthesized peptide derived from Nkx-6.1 . at AA range: 180-260
Mol wt	37849
Species reactivity	Human, Mouse, Rat
Clonality	Polyclonal
Recommended application	WB, ELISA
Concentration	1 mg/ml
Full name	Nkx-6.1 Antibody
Synonyms	NKX6-1; NKX6A; Homeobox protein Nkx-6.1; Homeobox protein NK-6 homolog A

This product is for research use only, not for use in human, therapeutic or diagnostic procedure.

Background

In the pancreas, NKX6.1 is required for the development of beta cells and is a potent bifunctional transcription regulator that binds to AT-rich sequences within the promoter region of target genes Iype et al.

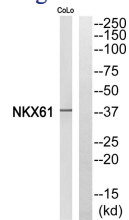
Recommended Dilution

WB: 1: 500 - 1: 2000

ELISA: 1: 40000

Not yet tested in other applications.

Images



Western blot analysis of NKX61 Antibody. The lane on the right is blocked with the NKX61 peptide.

Storage

-20°C for one year