

NPM Polyclonal Antibody

Description

Product type	Primary Antibody
Code	BT-AP06136
Host	Rabbit
Isotype	IgG
Size	20ul, 50ul, 100ul
Immunogen	The antiserum was produced against synthesized peptide derived from human NPM. AA range:201-250
Mol wt	32575
Species reactivity	Human, Mouse, Rat
Clonality	Polyclonal
Recommended application	WB, IHC-p, IF, ELISA
Concentration	1 mg/ml
Full name	NPM Antibody
Synonyms	NPM1; NPM; Nucleophosmin; NPM; Nucleolar phosphoprotein B23; Nucleolar protein NO38; Numatrin

This product is for research use only, not for use in human, therapeutic or diagnostic procedure.

Background

NPM1 encodes a phosphoprotein which moves between the nucleus and the cytoplasm. The gene product is thought to be involved in several processes including regulation of the ARF/p53 pathway. A number of genes are fusion partners have been characterized, in particular the anaplastic lymphoma kinase gene on chromosome 2. Mutations in NPM1 are associated with acute myeloid leukemia. More than a dozen pseudogenes of NPM1 have been identified. Alternative splicing results in multiple transcript variants.

Recommended Dilution

WB: 1: 500 - 1: 2000

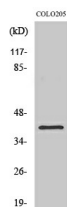
IHC: 1: 100 - 1: 300

IF: 1: 200 - 1: 1000

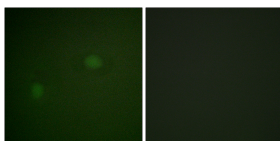
ELISA: 1: 20000

Not yet tested in other applications.

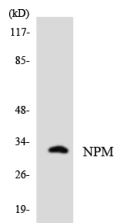
Images



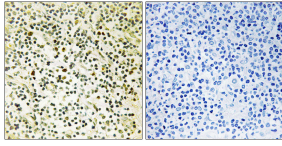
Western Blot analysis of various cells using NPM Polyclonal Antibody



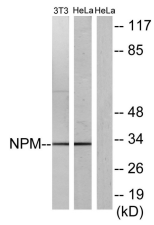
Immunofluorescence analysis of HeLa cells, using NPM Antibody. The picture on the right is blocked with the synthesized peptide.



Western blot analysis of the lysates from HT-29 cells using NPM antibody.



Immunohistochemistry analysis of paraffin-embedded human tonsil tissue, using NPM Antibody. The picture on the right is blocked with the synthesized peptide.



Western blot analysis of lysates from HeLa and NIH/3T3 cells, using NPM Antibody. The lane on the right is blocked with the synthesized peptide.

Storage

-20°C for one year

501 Changsheng S Rd, Nanhu Dist, Jiaxing, Zhejiang, China

Tel: 86 21 31007137 | E-mail: save@bt-laboratory.com | www.bt-laboratory.com