

Nrf2 Polyclonal Antibody

Description

Product type	Primary Antibody
Code	BT-AP06175
Host	Rabbit
Isotype	IgG
Size	20ul, 50ul, 100ul
Immunogen	Synthesized peptide derived from human Nrf2 around the non-acetylation site of K599.
Mol wt	75-100
Species reactivity	Human, Rat, Mouse
Clonality	Polyclonal
Recommended application	WB, IHC-p
Concentration	1 mg/ml
Full name	Nrf2 Antibody
Synonyms	Nuclear factor erythroid 2-related factor 2 (NF-E2-related factor 2) (NFE2-related factor 2) (HEBP1) (Nuclear factor, erythroid derived 2, like 2)

This product is for research use only, not for use in human, therapeutic or diagnostic procedure.

Background

NFE2L2 encodes a transcription factor (nuclear factor, erythroid 2 like 2) which is a member of a small family of basic leucine zipper (bZIP) proteins. The encoded transcription factor regulates genes which contain antioxidant response elements (ARE) in their promoters; many of these genes encode proteins involved in response to injury and inflammation which includes the production of free radicals. Multiple transcript variants encoding different isoforms have been characterized for NFE2L2.

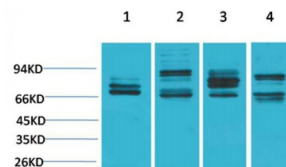
Recommended Dilution

WB: 1: 500 - 1: 2000

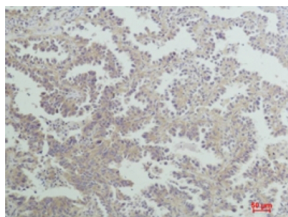
IHC-p: 1: 50 - 300

Not yet tested in other applications.

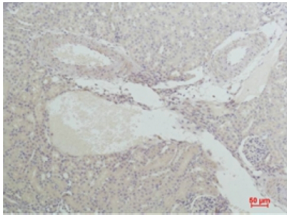
Images



Western blot analysis of 1) HeLa, 2) Mouse Liver Tissue, 3) PC12, 4) Rat Liver Tissue with Nrf2 Rabbit pAb diluted at 1:2,000.



Immunohistochemical analysis of paraffin-embedded Human Lung Carcinoma using Nrf2 Rabbit pAb diluted at 1:200.



Immunohistochemical analysis of paraffin-embedded Mouse Kidney Tissue using Nrf2Rabbit pAb diluted at 1:200.

Storage

-20°C for one year

501 Changsheng S Rd, Nanhu Dist, Jiaxing, Zhejiang, China

Tel: 86 21 31007137 | E-mail: save@bt-laboratory.com | www.bt-laboratory.com