

## OSR2 Polyclonal Antibody

### Description

<b>Product type</b>	Primary Antibody
<b>Code</b>	BT-AP06712
<b>Host</b>	Rabbit
<b>Isotype</b>	IgG
<b>Size</b>	20ul, 50ul, 100ul
<b>Immunogen</b>	Synthesized peptide derived from OSR2 . at AA range: 60-140
<b>Mol wt</b>	35513
<b>Species reactivity</b>	Human, Mouse, Rat
<b>Clonality</b>	Polyclonal
<b>Recommended application</b>	WB, ELISA
<b>Concentration</b>	1 mg/ml
<b>Full name</b>	OSR2 Antibody
<b>Synonyms</b>	OSR2; Protein odd-skipped-related 2

This product is for research use only, not for use in human, therapeutic or diagnostic procedure.

### Background

OSR2 is a mammalian homolog of the Drosophila odd-skipped family of transcription factors (Lan et al. 2004 [PubMed 15175245]).

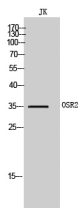
### Recommended Dilution

WB: 1: 500 - 1: 2000

ELISA: 1: 40000

Not yet tested in other applications.

### Images



Western Blot analysis of JK cells using OSR2 Polyclonal Antibody cells nucleus.

### Storage

-20°C for one year

501 Changsheng S Rd, Nanhu Dist, Jiaxing, Zhejiang, China

Tel: 86 21 31007137 | E-mail: [save@bt-laboratory.com](mailto:save@bt-laboratory.com) | [www.bt-laboratory.com](http://www.bt-laboratory.com)