

Ovol1 Polyclonal Antibody

Description

Product type	Primary Antibody
Code	BT-AP06720
Host	Rabbit
Isotype	IgG
Size	20ul, 50ul, 100ul
Immunogen	The antiserum was produced against synthesized peptide derived from human OVOL1. AA range:1-50
Mol wt	30259
Species reactivity	Human, Mouse
Clonality	Polyclonal
Recommended application	WB, IHC-p, ELISA
Concentration	1 mg/ml
Full name	Ovol1 Antibody
Synonyms	OVOL1; Putative transcription factor Ovo-like 1; hOvo1

This product is for research use only, not for use in human, therapeutic or diagnostic procedure.

Background

OVOL1 encodes a putative zinc finger containing transcription factor that is highly similar to homologous protein in Drosophila and mouse. Based on known functions in these species, this protein is likely involved in hair formation and spermatogenesis in human as well.

Recommended Dilution

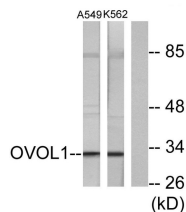
WB: 1: 500 - 1: 2000

IHC: 1: 100 - 1: 300

ELISA: 1: 40000

Not yet tested in other applications.

Images



Western blot analysis of lysates from K562 and A549 cells, using OVOL1 Antibody. The lane on the right is blocked with the synthesized peptide.

Storage

-20°C for one year