

## p23 Polyclonal Antibody

### Description

Product type	Primary Antibody
Code	BT-AP06752
Host	Rabbit
Isotype	IgG
Size	20ul, 50ul, 100ul
Immunogen	The antiserum was produced against synthesized peptide derived from human TEBP. AA range:79-128
Mol wt	18697
Species reactivity	Human, Mouse, Rat
Clonality	Polyclonal
Recommended application	WB, IHC-p, ELISA
Concentration	1 mg/ml
Full name	p23 Antibody
Synonyms	PTGES3; P23; TEBP; Prostaglandin E synthase 3; Cytosolic prostaglandin E2 synthase; cPGES; Hsp90 co-chaperone; Progesterone receptor complex p23; Telomerase-binding protein p23

This product is for research use only, not for use in human, therapeutic or diagnostic procedure.

### Background

Cyclin dependent kinase inhibitor 1A mediates the p53-dependent cell cycle G1 phase arrest in response to a variety of stress stimuli. Cyclin dependent kinase inhibitor 1A can interact with proliferating cell nuclear antigen, a DNA polymerase accessory factor, and plays a regulatory role in S phase DNA replication and DNA damage repair.

### Recommended Dilution

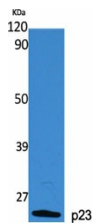
WB: 1: 500 - 1: 2000

IHC: 1: 100 - 1: 300

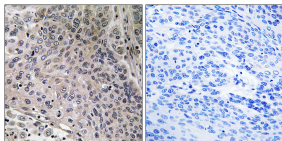
ELISA: 1: 10000

Not yet tested in other applications.

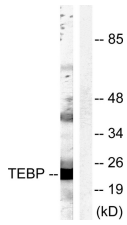
### Images



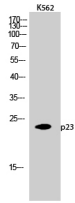
Western Blot analysis of various cells using p23 Polyclonal Antibody diluted at 1:2000



Immunohistochemistry analysis of paraffin-embedded human breast carcinoma tissue, using TEBP Antibody. The picture on the right is blocked with the synthesized peptide.



Western blot analysis of lysates from NIH/3T3 cells, treated with EGF 200ng/ml 30', using TEBP Antibody. The lane on the right is blocked with the synthesized peptide.



Western Blot analysis of K562 cells using p23 Polyclonal Antibody diluted at 1:2000

### Storage

-20°C for one year

501 Changsheng S Rd, Nanhu Dist, Jiaxing, Zhejiang, China

Tel: 86 21 31007137 | E-mail: [save@bt-laboratory.com](mailto:save@bt-laboratory.com) | [www.bt-laboratory.com](http://www.bt-laboratory.com)