

p35 Polyclonal Antibody

Description

Product type	Primary Antibody
Code	BT-AP06778
Host	Rabbit
Isotype	IgG
Size	20ul, 50ul, 100ul
Immunogen	The antiserum was produced against synthesized peptide derived from human CDK5R1. AA range:11-60
Mol wt	34060
Species reactivity	Human, Mouse, Rat
Clonality	Polyclonal
Recommended application	WB, IHC-p, IF, ELISA
Concentration	1 mg/ml
Full name	p35 Antibody
Synonyms	CDK5R1; CDK5R; NCK5A; Cyclin-dependent kinase 5 activator 1; CDK5 activator 1; Cyclin-dependent kinase 5 regulatory subunit 1; TPKII regulatory subunit

This product is for research use only, not for use in human, therapeutic or diagnostic procedure.

Background

Cyclin dependent kinase 5 regulatory subunit 1 encoded by CDK5R1 (p35) is a neuron-specific activator of cyclin-dependent kinase 5 (CDK5); the activation of CDK5 is required for proper development of the central nervous system. The p35 form of cyclin dependent kinase 5 regulatory subunit 1 is proteolytically cleaved by calpain, generating a p25 form. The cleavage of p35 into p25 results in relocalization of the protein from the cell periphery to nuclear and perinuclear regions. P25 deregulates CDK5 activity by prolonging its activation and changing its cellular location. The p25 form accumulates in the brain neurons of patients with Alzheimer's disease. This accumulation correlates with an increase in CDK5 kinase activity, and may lead to aberrantly phosphorylated forms of the microtubule-associated protein tau, which contributes to Alzheimer's disease.

Recommended Dilution

WB: 1: 500 - 1: 2000

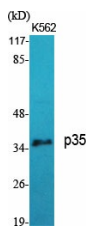
IHC: 1: 100 - 1: 300

IF: 1: 200 - 1: 1000

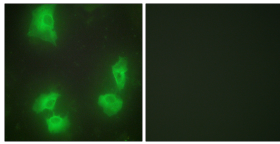
ELISA: 1: 20000

Not yet tested in other applications.

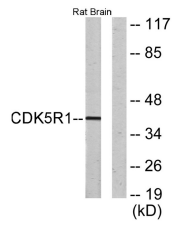
Images



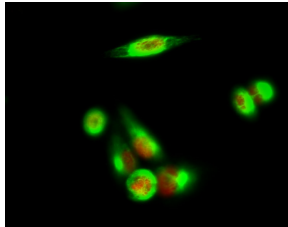
Western Blot analysis of various cells using p35 Polyclonal Antibody diluted at 1:1000



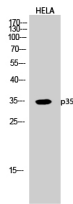
Immunofluorescence analysis of HeLa cells, using CDK5R1 Antibody. The picture on the right is blocked with the synthesized peptide.



Western blot analysis of lysates from rat brain cells, using CDK5R1 Antibody. The lane on the right is blocked with the synthesized peptide.



Immunofluorescence analysis of HeLa cell. 1, p35 Polyclonal Antibody (red) was diluted at 1:200 (4° overnight). 2, Caspase 9 Monoclonal Antibody (3-20) (green) was diluted at 1:200 (4° overnight). 3, Goat Anti Rabbit Alexa Fluor 594 was diluted at 1:1000 (room temperature, 50min). 4, Goat Anti Mouse Alexa Fluor 488 was diluted at 1:1000 (room temperature, 50min).



Western Blot analysis of HELA cells using p35 Polyclonal Antibody diluted at 1:1000

Storage

-20°C for one year

501 Changsheng S Rd, Nanhu Dist, Jiaxing, Zhejiang, China

Tel: 86 21 31007137 | E-mail: save@bt-laboratory.com | www.bt-laboratory.com