

## Pax-1 Polyclonal Antibody

### Description

<b>Product type</b>	Primary Antibody
<b>Code</b>	BT-AP06945
<b>Host</b>	Rabbit
<b>Isotype</b>	IgG
<b>Size</b>	20ul, 50ul, 100ul
<b>Immunogen</b>	The antiserum was produced against synthesized peptide derived from human Pax-1. AA range:318-367
<b>Mol wt</b>	46295
<b>Species reactivity</b>	Human
<b>Clonality</b>	Polyclonal
<b>Recommended application</b>	WB, IHC-p, ELISA
<b>Concentration</b>	1 mg/ml
<b>Full name</b>	Pax-1 Antibody
<b>Synonyms</b>	PAX1; HUP48; Paired box protein Pax-1; HuP48

This product is for research use only, not for use in human, therapeutic or diagnostic procedure.

### Background

PAX1 is a member of the paired box (PAX) family of transcription factors. Members of the PAX family typically contain a paired box domain and a paired-type homeodomain. These genes play critical roles during fetal development. PAX1 plays a role in pattern formation during embryogenesis and may be essential for development of the vertebral column. PAX1 is silenced by methylation in ovarian and cervical cancers and may be a tumor suppressor gene. Mutations in this gene are also associated with vertebral malformations.

### Recommended Dilution

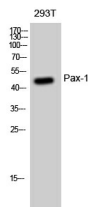
WB: 1: 500 - 1: 2000

IHC: 1: 100 - 1: 300

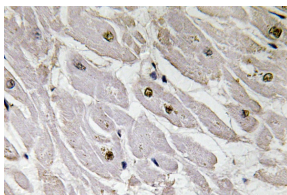
ELISA: 1: 5000

Not yet tested in other applications.

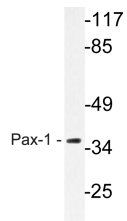
### Images



Western Blot analysis of 293T cells using Pax-1 Polyclonal Antibody diluted at 1:500 cells nucleus.



Immunohistochemistry analysis of Pax-1 antibody in paraffin-embedded human heart tissue.



Western blot analysis of lysate from HeLa cells, using Pax-1 antibody.

### Storage

-20°C for one year

501 Changsheng S Rd, Nanhu Dist, Jiaxing, Zhejiang, China

Tel: 86 21 31007137 | E-mail: [save@bt-laboratory.com](mailto:save@bt-laboratory.com) | [www.bt-laboratory.com](http://www.bt-laboratory.com)