

## PERK Polyclonal Antibody

### Description

<b>Product type</b>	Primary Antibody
<b>Code</b>	BT-AP07066
<b>Host</b>	Rabbit
<b>Isotype</b>	IgG
<b>Size</b>	20ul, 50ul, 100ul
<b>Immunogen</b>	The antiserum was produced against synthesized peptide derived from human E2AK3. AA range:61-110
<b>Mol wt</b>	125147
<b>Species reactivity</b>	Human
<b>Clonality</b>	Polyclonal
<b>Recommended application</b>	WB, IHC-p, IF, ELISA
<b>Concentration</b>	1 mg/ml
<b>Full name</b>	PERK Antibody
<b>Synonyms</b>	EIF2AK3; PEK; PERK; Eukaryotic translation initiation factor 2-alpha kinase 3; PRKR-like endoplasmic reticulum kinase; Pancreatic eIF2-alpha kinase; HsPEK

**This product is for research use only, not for use in human, therapeutic or diagnostic procedure.**

### Background

Eukaryotic translation initiation factor 2 alpha kinase 3 encoded by EIF2AK3 phosphorylates the alpha subunit of eukaryotic translation-initiation factor 2, leading to its inactivation, and thus to a rapid reduction of translational initiation and repression of global protein synthesis. Eukaryotic translation initiation factor 2 alpha kinase 3 is thought to modulate mitochondrial function. It is a type 1 membrane protein located in the endoplasmic reticulum (ER), where it is induced by ER stress caused by malfolded proteins. Mutations in EIF2AK3 are associated with Wolcott-Rallison syndrome.

### Recommended Dilution

WB: 1: 500 - 1: 2000

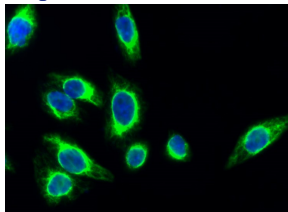
IHC: 1: 100 - 1: 300

IF: 1: 200 - 1: 1000

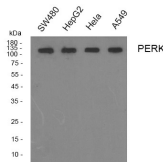
ELISA: 1: 40000

Not yet tested in other applications.

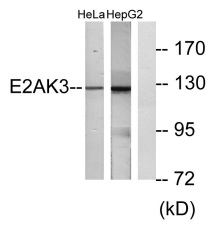
### Images



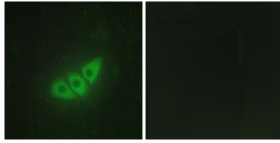
Immunofluorescence analysis of HeLa cell. 1,PERK Polyclonal Antibody(green) was diluted at 1:200(4° overnight). 2, Goat Anti Rabbit Alexa Fluor 488 was diluted at 1:1000(room temperature, 50min). 3 DAPI(blue) 10min.



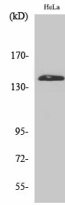
Western blot analysis of PERK Polyclonal Antibody, using HeLa, HepG2,SW480,A549 cell, 4° over night, secondary antibody(cat: RS0002 was diluted at 1:10000, 37° 1hour.



Western blot analysis of lysates from HeLa and HepG2 cells, using E2AK3 Antibody. The lane on the right is blocked with the synthesized peptide.



Immunofluorescence analysis of HepG2 cells, using E2AK3 Antibody. The picture on the right is blocked with the synthesized peptide.



Western Blot analysis of various cells using PERK Polyclonal Antibody diluted at 1:2000

### Storage

-20°C for one year

501 Changsheng S Rd, Nanhu Dist, Jiaxing, Zhejiang, China

Tel: 86 21 31007137 | E-mail: [save@bt-laboratory.com](mailto:save@bt-laboratory.com) | [www.bt-laboratory.com](http://www.bt-laboratory.com)