

PIG-H Polyclonal Antibody

Description

Product type	Primary Antibody
Code	BT-AP07169
Host	Rabbit
Isotype	IgG
Size	20ul, 50ul, 100ul
Immunogen	The antiserum was produced against synthesized peptide derived from human PIGH. AA range:137-186
Mol wt	21081
Species reactivity	Human, Mouse
Clonality	Polyclonal
Recommended application	IHC-p, ELISA
Concentration	1 mg/ml
Full name	PIG-H Antibody
Synonyms	PIGH; Phosphatidylinositol N-acetylglucosaminyltransferase subunit H; Phosphatidylinositol-glycan biosynthesis class H protein; PIG-H

This product is for research use only, not for use in human, therapeutic or diagnostic procedure.

Background

PIGH (phosphatidylinositol glycan anchor biosynthesis class H) encodes an endoplasmic reticulum associated protein that is involved in glycosylphosphatidylinositol (GPI)-anchor biosynthesis. The GPI anchor is a glycolipid found on many blood cells and which serves to anchor proteins to the cell surface. The protein encoded by PIGH is a subunit of the GPI N-acetylglucosaminyl (GlcNAc) transferase that transfers GlcNAc to phosphatidylinositol (PI) on the cytoplasmic side of the endoplasmic reticulum.

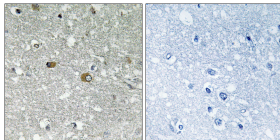
Recommended Dilution

IHC: 1: 100 - 1: 300

ELISA: 1: 40000

Not yet tested in other applications.

Images



Immunohistochemistry analysis of paraffin-embedded human brain tissue, using PIGH Antibody. The picture on the right is blocked with the synthesized peptide.

Storage

-20°C for one year