

## Pinin Polyclonal Antibody

### Description

<b>Product type</b>	Primary Antibody
<b>Code</b>	BT-AP07180
<b>Host</b>	Rabbit
<b>Isotype</b>	IgG
<b>Size</b>	20ul, 50ul, 100ul
<b>Immunogen</b>	The antiserum was produced against synthesized peptide derived from human PNN. AA range:211-260
<b>Mol wt</b>	81614
<b>Species reactivity</b>	Human, Mouse
<b>Clonality</b>	Polyclonal
<b>Recommended application</b>	WB, ELISA
<b>Concentration</b>	1 mg/ml
<b>Full name</b>	Pinin Antibody
<b>Synonyms</b>	PNN; DRS; MEMA; Pinin; 140 kDa nuclear and cell adhesion-related phosphoprotein; Desmosome-associated protein; Domain-rich serine protein; DRS protein; DRSP; Melanoma metastasis clone A protein; Nucle

**This product is for research use only, not for use in human, therapeutic or diagnostic procedure.**

### Background

PNN (Pinin, Desmosome Associated Protein) is a Protein Coding gene. Diseases associated with PNN include melanoma metastasis and premenstrual tension. Among its related pathways are RNA transport and mRNA surveillance pathway. Gene Ontology (GO) annotations related to PNN include poly(A) RNA binding and structural molecule activity.

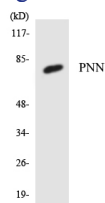
### Recommended Dilution

WB: 1: 500 - 1: 2000

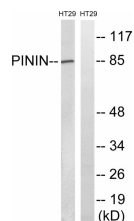
ELISA: 1: 20000

Not yet tested in other applications.

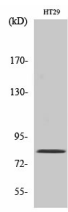
### Images



Western blot analysis of the lysates from K562 cells using PNN antibody.



Western blot analysis of lysates from HT-29 cells, using PNN Antibody. The lane on the right is blocked with the synthesized peptide.



## Western Blot analysis of various cells using Pinin Polyclonal Antibody

### Storage

-20°C for one year

501 Changsheng S Rd, Nanhu Dist, Jiaxing, Zhejiang, China

Tel: 86 21 31007137 | E-mail: [save@bt-laboratory.com](mailto:save@bt-laboratory.com) | [www.bt-laboratory.com](http://www.bt-laboratory.com)