

POTE-14/22 Polyclonal Antibody

Description

Product type	Primary Antibody
Code	BT-AP07336
Host	Rabbit
Isotype	IgG
Size	20ul, 50ul, 100ul
Immunogen	The antiserum was produced against synthesized peptide derived from human A26C2/3. AA range:178-227
Mol wt	71442
Species reactivity	Human
Clonality	Polyclonal
Recommended application	WB, IHC-p, ELISA
Concentration	1 mg/ml
Full name	POTE-14/22 Antibody
Synonyms	POTEH; A26C3; ACTBL1; POTE22; POTE ankyrin domain family member H; ANKRD26-like family C member 3; Prostate; ovary, testis-expressed protein on chromosome 22; POTE-22; POTEg; A26C2; POTE14; POTE anky

This product is for research use only, not for use in human, therapeutic or diagnostic procedure.

Background

POT1 is a member of the telombin family and encodes a nuclear protein involved in telomere maintenance. Specifically, protection of telomeres 1 functions as a member of a multi-protein complex that binds to the TTAGGG repeats of telomeres, regulating telomere length and protecting chromosome ends from illegitimate recombination, catastrophic chromosome instability, and abnormal chromosome segregation. Increased transcriptional expression of POT1 is associated with stomach carcinogenesis and its progression.

Recommended Dilution

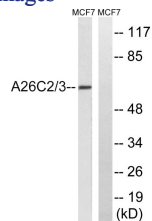
WB: 1: 500 - 1: 2000

IHC: 1: 100 - 1: 300

ELISA: 1: 40000

Not yet tested in other applications.

Images



Western blot analysis of lysates from MCF-7 cells, using A26C2/3 Antibody. The lane on the right is blocked with the synthesized peptide.



Western Blot analysis of AD293 using POTE-14/22 Polyclonal Antibody diluted at 1:2000

Storage

-20°C for one year

501 Changsheng S Rd, Nanhu Dist, Jiaxing, Zhejiang, China

Tel: 86 21 31007137 | E-mail: save@bt-laboratory.com | www.bt-laboratory.com