

PP2A-B56-Delta Polyclonal Antibody

Description

Product type	Primary Antibody
Code	BT-AP07346
Host	Rabbit
Isotype	IgG
Size	20ul, 50ul, 100ul
Immunogen	The antiserum was produced against synthesized peptide derived from human PPP2R5D. AA range:544-593
Mol wt	69992
Species reactivity	Human, Mouse, Rat
Clonality	Polyclonal
Recommended application	WB, IHC-p, ELISA
Concentration	1 mg/ml
Full name	PP2A-B56-delta Antibody
Synonyms	PPP2R5D; Serine/threonine-protein phosphatase 2A 56 kDa regulatory subunit delta isoform; PP2A B subunit isoform B'-delta; PP2A B subunit isoform B56-delta; PP2A B subunit isoform PR61-delta; PP2A B s

This product is for research use only, not for use in human, therapeutic or diagnostic procedure.

Background

The product of PPP2R5D (protein phosphatase 2 regulatory subunit B'delta) belongs to the phosphatase 2A regulatory subunit B family. Protein phosphatase 2A is one of the four major Ser/Thr phosphatases, and it is implicated in the negative control of cell growth and division. It consists of a common heteromeric core enzyme, which is composed of a catalytic subunit and a constant regulatory subunit, that associates with a variety of regulatory subunits. The B regulatory subunit might modulate substrate selectivity and catalytic activity. PPP2R5D encodes a delta isoform of the regulatory subunit B56 subfamily. Alternatively spliced transcript variants encoding different isoforms have been identified.

Recommended Dilution

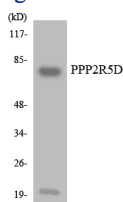
WB: 1: 500 - 1: 2000

IHC: 1: 100 - 1: 300

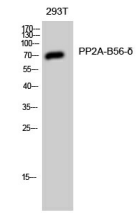
ELISA: 1: 10000

Not yet tested in other applications.

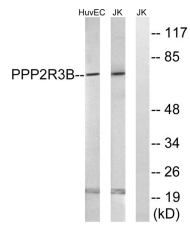
Images



Western blot analysis of the lysates from HUVEC cells using PPP2R5D antibody.



Western Blot analysis of 293T cells using PP2A-B56- δ Polyclonal Antibody diluted at 1:1000



Western blot analysis of lysates from Jurkat and HUVEC cells, using PPP2R3B Antibody. The lane on the right is blocked with the synthesized peptide.

Storage

-20°C for one year

501 Changsheng S Rd, Nanhu Dist, Jiaxing, Zhejiang, China

Tel: 86 21 31007137 | E-mail: save@bt-laboratory.com | www.bt-laboratory.com