

## PRIM1 Polyclonal Antibody

### Description

<b>Product type</b>	Primary Antibody
<b>Code</b>	BT-AP07399
<b>Host</b>	Rabbit
<b>Isotype</b>	IgG
<b>Size</b>	20ul, 50ul, 100ul
<b>Immunogen</b>	The antiserum was produced against synthesized peptide derived from human PRIM1. AA range:371-420
<b>Mol wt</b>	49902
<b>Species reactivity</b>	Human, Mouse, Rat
<b>Clonality</b>	Polyclonal
<b>Recommended application</b>	WB, IHC-p, ELISA
<b>Concentration</b>	1 mg/ml
<b>Full name</b>	PRIM1 Antibody
<b>Synonyms</b>	PRIM1; DNA primase small subunit; DNA primase 49 kDa subunit; p49

**This product is for research use only, not for use in human, therapeutic or diagnostic procedure.**

### Background

The replication of DNA in eukaryotic cells is carried out by a complex chromosomal replication apparatus, in which DNA polymerase alpha and primase are two key enzymatic components. Primase, which is a heterodimer of a small subunit and a large subunit, synthesizes small RNA primers for the Okazaki fragments made during discontinuous DNA replication. Primase (DNA) subunit 1 encoded by PRIM1 is the small, 49 kDa primase subunit.

### Recommended Dilution

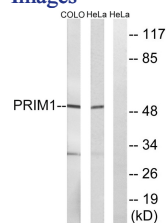
WB: 1: 500 - 1: 2000

IHC: 1: 100 - 1: 300

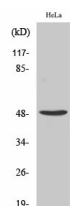
ELISA: 1: 10000

Not yet tested in other applications.

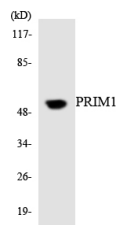
### Images



Western blot analysis of lysates from COLO and HeLa cells, using PRIM1 Antibody. The lane on the right is blocked with the synthesized peptide.



Western Blot analysis of various cells using PRIM1 Polyclonal Antibody cells nucleus.



Western blot analysis of the lysates from K562 cells using PRIM1 antibody.

### Storage

-20°C for one year

501 Changsheng S Rd, Nanhu Dist, Jiaxing, Zhejiang, China

Tel: 86 21 31007137 | E-mail: [save@bt-laboratory.com](mailto:save@bt-laboratory.com) | [www.bt-laboratory.com](http://www.bt-laboratory.com)