

PRPF31 Polyclonal Antibody

Description

Product type	Primary Antibody
Code	BT-AP07425
Host	Rabbit
Isotype	IgG
Size	20ul, 50ul, 100ul
Immunogen	The antiserum was produced against synthesized peptide derived from human PRPF31. AA range:331-380
Mol wt	55456
Species reactivity	Human, Mouse
Clonality	Polyclonal
Recommended application	WB, ELISA
Concentration	1 mg/ml
Full name	PRPF31 Antibody
Synonyms	PRPF31; PRP31; U4/U6 small nuclear ribonucleoprotein Prp31; Pre-mRNA-processing factor 31; Serologically defined breast cancer antigen NY-BR-99; U4/U6 snRNP 61 kDa protein; Protein 61K; hPrp31

This product is for research use only, not for use in human, therapeutic or diagnostic procedure.

Background

PRPF31 encodes a component of the spliceosome complex and is one of several retinitis pigmentosa-causing genes. When the gene product is added to the spliceosome complex, activation occurs.

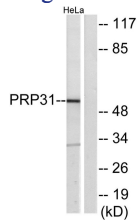
Recommended Dilution

WB: 1: 500 - 1: 2000

ELISA: 1: 10000

Not yet tested in other applications.

Images



Western blot analysis of lysates from HeLa cells, using PRPF31 Antibody. The lane on the right is blocked with the synthesized peptide.

Storage

-20°C for one year