

PRPF39 Polyclonal Antibody

Description

| | |
|-------------------------|--|
| Product type | Primary Antibody |
| Code | BT-AP07427 |
| Host | Rabbit |
| Isotype | IgG |
| Size | 20ul, 50ul, 100ul |
| Immunogen | The antiserum was produced against synthesized peptide derived from human PRPF39. AA range:263-312 |
| Mol wt | 73887 |
| Species reactivity | Human, Mouse |
| Clonality | Polyclonal |
| Recommended application | WB, IHC-p, ELISA |
| Concentration | 1 mg/ml |
| Full name | PRPF39 Antibody |
| Synonyms | PRPF39; Pre-mRNA-processing factor 39; PRP39 homolog |

This product is for research use only, not for use in human, therapeutic or diagnostic procedure.

Background

PRPF39 also termed as Pre mRNA processing factor 39 or PRP39 homolog is a 669 amino acid protein, which contains 7 HAT repeats and belongs to the PRP39 family. PRPF39 localizes in nucleus and may play a role in mRNA splicing.

Recommended Dilution

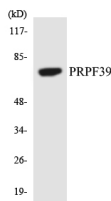
WB: 1: 500 - 1: 2000

IHC: 1: 100 - 1: 300

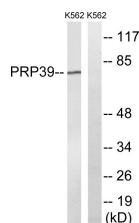
ELISA: 1: 40000

Not yet tested in other applications.

Images



Western blot analysis of the lysates from COLO205 cells using PRPF39 antibody.



Western blot analysis of lysates from K562 cells, using PRPF39 Antibody. The lane on the right is blocked with the synthesized peptide.

Storage

-20°C for one year

