

PRX1 Polyclonal Antibody

Description

Product type	Primary Antibody
Code	BT-AP07438
Host	Rabbit
Isotype	IgG
Size	20ul, 50ul, 100ul
Immunogen	Synthesized peptide derived from PRX1 . at AA range: 30-110
Mol wt	27296
Species reactivity	Human, Mouse, Rat
Clonality	Polyclonal
Recommended application	WB, ELISA
Concentration	1 mg/ml
Full name	PRX1 Antibody
Synonyms	PRRX1; PMX1; Paired mesoderm homeobox protein 1; Homeobox protein PHOX1; Paired-related homeobox protein 1; PRX-1

This product is for research use only, not for use in human, therapeutic or diagnostic procedure.

Background

The DNA-associated protein encoded by paired related homeobox 1 is a member of the paired family of homeobox proteins localized to the nucleus. Paired related homeobox 1 functions as a transcription co-activator, enhancing the DNA-binding activity of serum response factor, a protein required for the induction of genes by growth and differentiation factors. Paired related homeobox 1 regulates muscle creatine kinase, indicating a role in the establishment of diverse mesodermal muscle types. Alternative splicing yields two isoforms that differ in abundance and expression patterns.

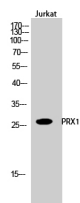
Recommended Dilution

WB: 1: 500 - 1: 2000

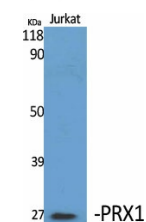
ELISA: 1: 10000

Not yet tested in other applications.

Images



Western Blot analysis of Jurkat cells using PRX1 Polyclonal Antibody cells nucleus.



Western Blot analysis of various cells using PRX1 Polyclonal Antibody cells nucleus.

Storage

-20°C for one year

501 Changsheng S Rd, Nanhu Dist, Jiaxing, Zhejiang, China

Tel: 86 21 31007137 | E-mail: save@bt-laboratory.com | www.bt-laboratory.com