

## PTP IA-2Beta Polyclonal Antibody

### Description

<b>Product type</b>	Primary Antibody
<b>Code</b>	BT-AP07490
<b>Host</b>	Rabbit
<b>Isotype</b>	IgG
<b>Size</b>	20ul, 50ul, 100ul
<b>Immunogen</b>	The antiserum was produced against synthesized peptide derived from human PTPRN2. AA range:206-255
<b>Mol wt</b>	111271
<b>Species reactivity</b>	Human, Mouse, Rat
<b>Clonality</b>	Polyclonal
<b>Recommended application</b>	WB, ELISA
<b>Concentration</b>	1 mg/ml
<b>Full name</b>	PTP IA-2beta Antibody
<b>Synonyms</b>	PTPRN2; KIAA0387; Receptor-type tyrosine-protein phosphatase N2; R-PTP-N2; Islet cell autoantigen-related protein; IAR; ICAAR; Phogrin

This product is for research use only, not for use in human, therapeutic or diagnostic procedure.

### Background

PTPRN2 (protein tyrosine phosphatase, receptor type N2) encodes a protein with sequence similarity to receptor-like protein tyrosine phosphatases. However, tyrosine phosphatase activity has not been experimentally validated for this protein. Studies of the rat ortholog suggest that the encoded protein may instead function as a phosphatidylinositol phosphatase with the ability to dephosphorylate phosphatidylinositol 3-phosphate and phosphatidylinositol 4,5-diphosphate, and this function may be involved in the regulation of insulin secretion. This protein has been identified as an autoantigen in insulin-dependent diabetes mellitus. Alternative splicing results in multiple transcript variants.

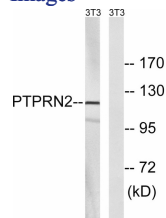
### Recommended Dilution

WB: 1: 500 - 1: 2000

ELISA: 1: 10000

Not yet tested in other applications.

### Images



Western blot analysis of lysates from NIH/3T3 cells, using PTPRN2 Antibody. The lane on the right is blocked with the synthesized peptide.

### Storage

-20°C for one year