

Rad18 Polyclonal Antibody

Description

Product type	Primary Antibody
Code	BT-AP07602
Host	Rabbit
Isotype	IgG
Size	20ul, 50ul, 100ul
Immunogen	The antiserum was produced against synthesized peptide derived from human RAD18. AA range:301-350
Mol wt	56195
Species reactivity	Human, Rat
Clonality	Polyclonal
Recommended application	WB, ELISA
Concentration	1 mg/ml
Full name	Rad18 Antibody
Synonyms	RAD18; RNF73; E3 ubiquitin-protein ligase RAD18; Postreplication repair protein RAD18; hHR18; hRAD18; RING finger protein 73

This product is for research use only, not for use in human, therapeutic or diagnostic procedure.

Background

RAD18, E3 ubiquitin protein ligase encoded by RAD18 is highly similar to *S. cerevisiae* DNA damage repair protein Rad18. Yeast Rad18 functions through its interaction with Rad6, which is an ubiquitin-conjugating enzyme required for post-replication repair of damaged DNA. Similar to its yeast counterpart, RAD18, E3 ubiquitin protein ligase is able to interact with the human homolog of yeast Rad6 protein through a conserved ring-finger motif. Mutation of this motif results in defective replication of UV-damaged DNA and hypersensitivity to multiple mutagens.

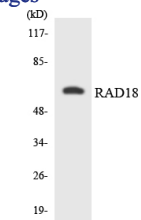
Recommended Dilution

WB: 1: 500 - 1: 2000

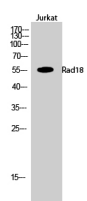
ELISA: 1: 40000

Not yet tested in other applications.

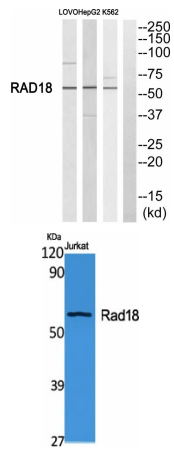
Images



Western blot analysis of the lysates from COLO205 cells using RAD18 antibody.



Western Blot analysis of Jurkat cells using Rad18 Polyclonal Antibody cells nucleus.



Western blot analysis of RAD18 Antibody. The lane on the right is blocked with the RAD18 peptide.

Western Blot analysis of various cells using Rad18 Polyclonal Antibody cells nucleus.

Storage

-20°C for one year

501 Changsheng S Rd, Nanhu Dist, Jiaxing, Zhejiang, China

Tel: 86 21 31007137 | E-mail: save@bt-laboratory.com | www.bt-laboratory.com