

Rad51 Polyclonal Antibody

Description

Product type	Primary Antibody
Code	BT-AP07608
Host	Rabbit
Isotype	IgG
Size	20ul, 50ul, 100ul
Immunogen	The antiserum was produced against synthesized peptide derived from human RAD51. AA range:281-330
Mol wt	36966
Species reactivity	Human, Mouse
Clonality	Polyclonal
Recommended application	WB, IHC-p, ELISA
Concentration	1 mg/ml
Full name	Rad51 Antibody
Synonyms	RAD51; RAD51A; RECA; DNA repair protein RAD51 homolog 1; HsRAD51; hRAD51; RAD51 homolog A

This product is for research use only, not for use in human, therapeutic or diagnostic procedure.

Background

RAD51 encoded by RAD51(RAD51 recombinase) is a member of the RAD51 protein family. RAD51 family members are highly similar to bacterial RecA and *Saccharomyces cerevisiae* Rad51, and are known to be involved in the homologous recombination and repair of DNA. This protein can interact with the ssDNA-binding protein RPA and RAD52, and it is thought to play roles in homologous pairing and strand transfer of DNA. This protein is also found to interact with BRCA1 and BRCA2, which may be important for the cellular response to DNA damage. BRCA2 is shown to regulate both the intracellular localization and DNA-binding ability of this protein. Loss of these controls following BRCA2 inactivation may be a key event leading to genomic instability and tumorigenesis. Multiple transcript variants encoding different isoforms have been found for RAD51.

Recommended Dilution

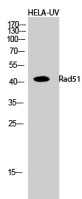
WB: 1: 500 - 1: 2000

IHC: 1: 100 - 1: 300

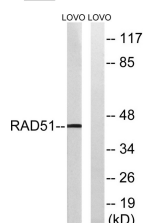
ELISA: 1: 20000

Not yet tested in other applications.

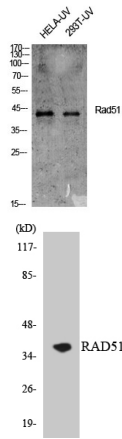
Images



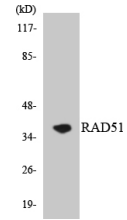
Western Blot analysis of HELA-UV cells using Rad51 Polyclonal Antibody diluted at 1:500 cells nucleus.



Western blot analysis of lysates from LOVO cells, using RAD51 Antibody. The lane on the right is blocked with the synthesized peptide.



Western blot analysis of various cells using Rad51 Polyclonal Antibody diluted at 1:500 cells nucleus.



Western blot analysis of the lysates from HeLa cells using RAD51 antibody.

Storage

-20°C for one year

501 Changsheng S Rd, Nanhu Dist, Jiaxing, Zhejiang, China

Tel: 86 21 31007137 | E-mail: save@bt-laboratory.com | www.bt-laboratory.com