

Rad52 Polyclonal Antibody

Description

| | |
|--------------------------------|--|
| Product type | Primary Antibody |
| Code | BT-AP07612 |
| Host | Rabbit |
| Isotype | IgG |
| Size | 20ul, 50ul, 100ul |
| Immunogen | The antiserum was produced against synthesized peptide derived from human RAD52. AA range:70-119 |
| Mol wt | 46169 |
| Species reactivity | Human, Mouse |
| Clonality | Polyclonal |
| Recommended application | WB, IHC-p, IF, ELISA |
| Concentration | 1 mg/ml |
| Full name | Rad52 Antibody |
| Synonyms | RAD52; DNA repair protein RAD52 homolog |

This product is for research use only, not for use in human, therapeutic or diagnostic procedure.

Background

RAD52 homolog, DNA repair protein encoded by RAD52 shares similarity with *Saccharomyces cerevisiae* Rad52, a protein important for DNA double-strand break repair and homologous recombination. RAD52 product was shown to bind single-stranded DNA ends, and mediate the DNA-DNA interaction necessary for the annealing of complementary DNA strands. It was also found to interact with DNA recombination protein RAD51, which suggested its role in RAD51 related DNA recombination and repair. A pseudogene of RAD52 is present on chromosome 2. Alternative splicing results in multiple transcript variants. Additional alternatively spliced transcript variants of RAD52 have been described, but their full-length nature is not known.

Recommended Dilution

WB: 1: 500 - 1: 2000

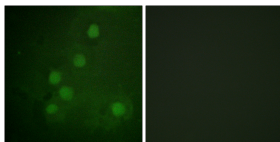
IHC: 1: 100 - 1: 300

IF: 1: 200 - 1: 1000

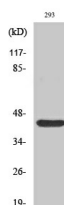
ELISA: 1: 10000

Not yet tested in other applications.

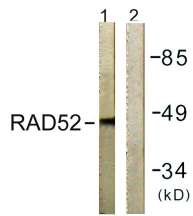
Images



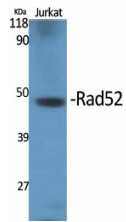
Immunofluorescence analysis of COS7 cells, using RAD52 Antibody. The picture on the right is blocked with the synthesized peptide.



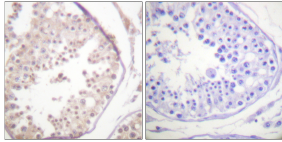
Western Blot analysis of 293 cells using Rad52 Polyclonal Antibody cells nucleus.



Western blot analysis of lysates from 293 cells, using RAD52 Antibody. The lane on the right is blocked with the synthesized peptide.



Western Blot analysis of various cells using Rad52 Polyclonal Antibody cells nucleus.



Immunohistochemistry analysis of paraffin-embedded human testis tissue, using RAD52 Antibody. The picture on the right is blocked with the synthesized peptide.

Storage

-20°C for one year

501 Changsheng S Rd, Nanhu Dist, Jiaxing, Zhejiang, China

Tel: 86 21 31007137 | E-mail: save@bt-laboratory.com | www.bt-laboratory.com