

## Rad54 Polyclonal Antibody

### Description

<b>Product type</b>	Primary Antibody
<b>Code</b>	BT-AP07613
<b>Host</b>	Rabbit
<b>Isotype</b>	IgG
<b>Size</b>	20ul, 50ul, 100ul
<b>Immunogen</b>	The antiserum was produced against synthesized peptide derived from human RAD54L. AA range:221-270
<b>Mol wt</b>	84352
<b>Species reactivity</b>	Human, Mouse
<b>Clonality</b>	Polyclonal
<b>Recommended application</b>	WB, IHC-p, IF, ELISA
<b>Concentration</b>	1 mg/ml
<b>Full name</b>	Rad54 Antibody
<b>Synonyms</b>	RAD54L; RAD54A; DNA repair and recombination protein RAD54-like; RAD54 homolog; hHR54; hRAD54

This product is for research use only, not for use in human, therapeutic or diagnostic procedure.

### Background

The protein encoded by RAD54L (RAD54-like) belongs to the DEAD-like helicase superfamily, and shares similarity with *Saccharomyces cerevisiae* Rad54, a protein known to be involved in the homologous recombination and repair of DNA. This protein has been shown to play a role in homologous recombination related repair of DNA double-strand breaks. The binding of this protein to double-strand DNA induces a DNA topological change, which is thought to facilitate homologous DNA pairing, and stimulate DNA recombination. Alternative splicing results in multiple transcript variants encoding the same protein.

### Recommended Dilution

WB: 1: 500 - 1: 2000

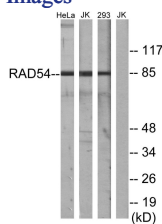
IHC: 1: 100 - 1: 300

IF: 1: 200 - 1: 1000

ELISA: 1: 5000

Not yet tested in other applications.

### Images



Western blot analysis of lysates from HeLa cells, Jurkat cells, and 293 cells, using RAD54 Antibody. The lane on the right is blocked with the synthesized peptide.

### Storage

-20°C for one year