

Ref-1 Polyclonal Antibody

Description

Product type	Primary Antibody
Code	BT-AP07735
Host	Rabbit
Isotype	IgG
Size	20ul, 50ul, 100ul
Immunogen	The antiserum was produced against synthesized peptide derived from human APEX1. AA range:191-240
Mol wt	35555
Species reactivity	Human, Mouse, Rat
Clonality	Polyclonal
Recommended application	WB, IHC-p, ELISA
Concentration	1 mg/ml
Full name	Ref-1 Antibody
Synonyms	APEX1; APE; APE1; APEX; APX; HAP1; REF1; DNA-(apurinic or apyrimidinic site) lyase; APEX nuclease; APEN; Apurinic-apyrimidinic endonuclease I; AP endonuclease I; APE-1; REF-1; Redox factor-1

This product is for research use only, not for use in human, therapeutic or diagnostic procedure.

Background

Apurinic/apyrimidinic (AP) sites occur frequently in DNA molecules by spontaneous hydrolysis, by DNA damaging agents or by DNA glycosylases that remove specific abnormal bases. AP sites are pre-mutagenic lesions that can prevent normal DNA replication so the cell contains systems to identify and repair such sites. Class II AP endonucleases cleave the phosphodiester backbone 5' to the AP site. APEX1 encodes the major AP endonuclease in human cells. Splice variants have been found for this gene; all encode the same protein.

Recommended Dilution

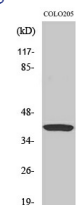
WB: 1: 500 - 1: 2000

IHC: 1: 100 - 1: 300

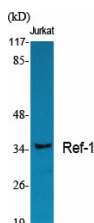
ELISA: 1: 10000

Not yet tested in other applications.

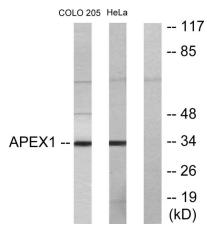
Images



Western Blot analysis of HeLa cells using Ref-1 Polyclonal Antibody diluted at 1:2000



Western Blot analysis of various cells using Ref-1 Polyclonal Antibody diluted at 1:2000



Western blot analysis of lysates from COLO205 and HeLa cells, using APEX1 Antibody. The lane on the right is blocked with the synthesized peptide.

Storage

-20°C for one year

501 Changsheng S Rd, Nanhu Dist, Jiaxing, Zhejiang, China

Tel: 86 21 31007137 | E-mail: save@bt-laboratory.com | www.bt-laboratory.com