

RFC2 Polyclonal Antibody

Description

Product type	Primary Antibody
Code	BT-AP07770
Host	Rabbit
Isotype	IgG
Size	20ul, 50ul, 100ul
Immunogen	The antiserum was produced against synthesized peptide derived from human RFC2. AA range:131-180
Mol wt	39157
Species reactivity	Human, Mouse, Rat
Clonality	Polyclonal
Recommended application	WB, ELISA
Concentration	1 mg/ml
Full name	RFC2 Antibody
Synonyms	RFC2; Replication factor C subunit 2; Activator 1 40 kDa subunit; A1 40 kDa subunit; Activator 1 subunit 2; Replication factor C 40 kDa subunit; RF-C 40 kDa subunit; RFC40

This product is for research use only, not for use in human, therapeutic or diagnostic procedure.

Background

RFC2 encodes a member of the activator 1 small subunits family. The elongation of primed DNA templates by DNA polymerase delta and epsilon requires the action of the accessory proteins, proliferating cell nuclear antigen (PCNA) and replication factor C (RFC). Replication factor C, also called activator 1, is a protein complex consisting of five distinct subunits. RFC2 encodes the 40 kD subunit, which has been shown to be responsible for binding ATP and may help promote cell survival. Disruption of RFC2 is associated with Williams syndrome. Alternatively spliced transcript variants encoding distinct isoforms have been described. A pseudogene of RFC2 has been defined on chromosome 2.

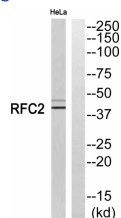
Recommended Dilution

WB: 1: 500 - 1: 2000

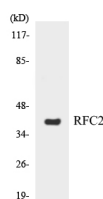
ELISA: 1: 10000

Not yet tested in other applications.

Images



Western blot analysis of RFC2 Antibody. The lane on the right is blocked with the RFC2 peptide.



Western blot analysis of the lysates from HT-29 cells using RFC2 antibody.

Storage

-20°C for one year

501 Changsheng S Rd, Nanhu Dist, Jiaxing, Zhejiang, China

Tel: 86 21 31007137 | E-mail: save@bt-laboratory.com | www.bt-laboratory.com