

RFPL4A Polyclonal Antibody

Description

Product type	Primary Antibody
Code	BT-AP07777
Host	Rabbit
Isotype	IgG
Size	20ul, 50ul, 100ul
Immunogen	The antiserum was produced against synthesized peptide derived from human RFPL4A. AA range:155-204
Mol wt	38513
Species reactivity	Human
Clonality	Polyclonal
Recommended application	WB, ELISA
Concentration	1 mg/ml
Full name	RFPL4A Antibody
Synonyms	RFPL4A; RFPL4; RNF210; Ret finger protein-like 4A; RING finger protein 210

This product is for research use only, not for use in human, therapeutic or diagnostic procedure.

Background

The ret finger protein-like 4 gene, Rfp14, encodes a putative E3 ubiquitin-protein ligase expressed in adult germ cells.

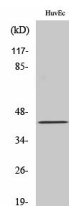
Recommended Dilution

WB: 1: 500 - 1: 2000

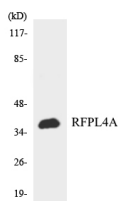
ELISA: 1: 5000

Not yet tested in other applications.

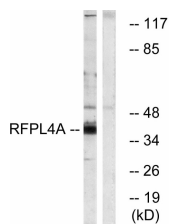
Images



Western Blot analysis of various cells using RFPL4A Polyclonal Antibody



Western blot analysis of the lysates from HeLa cells using RFPL4A antibody.



Western blot analysis of lysates from HUVEC cells, using RFPL4A Antibody. The lane on the right is blocked with the synthesized peptide.

Storage

-20°C for one year

501 Changsheng S Rd, Nanhu Dist, Jiaxing, Zhejiang, China

Tel: 86 21 31007137 | E-mail: save@bt-laboratory.com | www.bt-laboratory.com