

RFX3 Polyclonal Antibody

Description

Product type	Primary Antibody
Code	BT-AP07782
Host	Rabbit
Isotype	IgG
Size	20ul, 50ul, 100ul
Immunogen	The antiserum was produced against synthesized peptide derived from human RFX3. AA range:641-690
Mol wt	83530
Species reactivity	Human, Mouse
Clonality	Polyclonal
Recommended application	WB, IHC-p, ELISA
Concentration	1 mg/ml
Full name	RFX3 Antibody
Synonyms	RFX3; Transcription factor RFX3; Regulatory factor X 3

This product is for research use only, not for use in human, therapeutic or diagnostic procedure.

Background

RFX3 is a member of the regulatory factor X gene family, which encodes transcription factors that contain a highly-conserved winged helix DNA binding domain. Transcription factor RFX3 encoded by this gene is structurally related to regulatory factors X1, X2, X4, and X5. It is a transcriptional activator that can bind DNA as a monomer or as a heterodimer with other RFX family members. Multiple transcript variants encoding different isoforms have been described for this gene.

Recommended Dilution

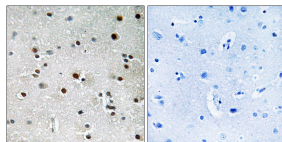
WB: 1: 500 - 1: 2000

IHC: 1: 100 - 1: 300

ELISA: 1: 40000

Not yet tested in other applications.

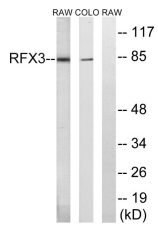
Images



Immunohistochemistry analysis of paraffin-embedded human brain tissue, using RFX3 Antibody. The picture on the right is blocked with the synthesized peptide.



Western Blot analysis of various cells using RFX3 Polyclonal Antibody cells nucleus.



Western blot analysis of lysates from COLO and RAW264.7 cells, using RFX3 Antibody. The lane on the right is blocked with the synthesized peptide.

Storage

-20°C for one year

501 Changsheng S Rd, Nanhu Dist, Jiaxing, Zhejiang, China

Tel: 86 21 31007137 | E-mail: save@bt-laboratory.com | www.bt-laboratory.com