

Ribosomal Protein S4X Polyclonal Antibody

Description

Product type	Primary Antibody
Code	BT-AP07888
Host	Rabbit
Isotype	IgG
Size	20ul, 50ul, 100ul
Immunogen	The antiserum was produced against synthesized peptide derived from human RPS4X. AA range:81-130
Mol wt	29598
Species reactivity	Human, Mouse, Rat
Clonality	Polyclonal
Recommended application	WB, IF, ELISA
Concentration	1 mg/ml
Full name	Ribosomal Protein S4X Antibody
Synonyms	RPS4X; CCG2; RPS4; SCAR; 40S ribosomal protein S4; X isoform; SCR10; Single copy abundant mRNA protein

This product is for research use only, not for use in human, therapeutic or diagnostic procedure.

Background

Cytoplasmic ribosomes, organelles that catalyze protein synthesis, consist of a small 40S subunit and a large 60S subunit. Together these subunits are composed of 4 RNA species and approximately 80 structurally distinct proteins. RPS4X encodes ribosomal protein S4, a component of the 40S subunit. Ribosomal protein S4 is the only ribosomal protein known to be encoded by more than one gene, namely this gene and ribosomal protein S4, Y-linked (RPS4Y). The 2 isoforms encoded by these genes are not identical, but are functionally equivalent. Ribosomal protein S4 belongs to the S4E family of ribosomal proteins. This gene is not subject to X-inactivation. It has been suggested that haploinsufficiency of the ribosomal protein S4 genes plays a role in Turner syndrome; however, this hypothesis is controversial. As is typical for genes encoding ribosomal proteins, there are multiple processed pseudogenes of this gene dispersed through the genome.

Recommended Dilution

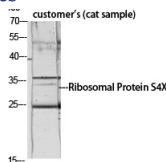
WB: 1: 500 - 1: 2000

IF: 1: 200 - 1: 1000

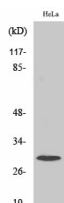
ELISA: 1: 40000

Not yet tested in other applications.

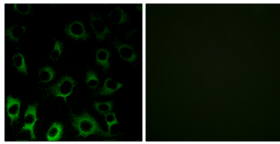
Images



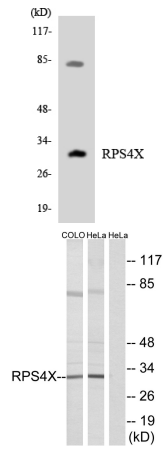
Western Blot analysis of customer's (cat sample) using Ribosomal Protein S4X Polyclonal Antibody diluted at 1:1000



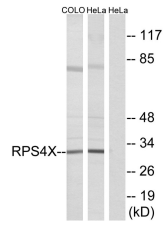
Western Blot analysis of various cells using Ribosomal Protein S4X Polyclonal Antibody diluted at 1:1000



Immunofluorescence analysis of HUVEC cells, using RPS4X Antibody. The picture on the right is blocked with the synthesized peptide.



Western blot analysis of the lysates from HT-29 cells using RPS4X antibody.



Western blot analysis of lysates from HeLa and COLO cells, using RPS4X Antibody. The lane on the right is blocked with the synthesized peptide.

Storage

-20°C for one year

501 Changsheng S Rd, Nanhu Dist, Jiaxing, Zhejiang, China

Tel: 86 21 31007137 | E-mail: save@bt-laboratory.com | www.bt-laboratory.com