

## RIN1 Polyclonal Antibody

### Description

<b>Product type</b>	Primary Antibody
<b>Code</b>	BT-AP07898
<b>Host</b>	Rabbit
<b>Isotype</b>	IgG
<b>Size</b>	20ul, 50ul, 100ul
<b>Immunogen</b>	The antiserum was produced against synthesized peptide derived from human RIN1. AA range:655-704
<b>Mol wt</b>	84099
<b>Species reactivity</b>	Human, Mouse, Rat
<b>Clonality</b>	Polyclonal
<b>Recommended application</b>	WB, ELISA
<b>Concentration</b>	1 mg/ml
<b>Full name</b>	RIN1 Antibody
<b>Synonyms</b>	RIN1; Ras and Rab interactor 1; Ras inhibitor JC99; Ras interaction/interference protein 1

**This product is for research use only, not for use in human, therapeutic or diagnostic procedure.**

### Background

Ras is a membrane-associated small G protein that is indirectly coupled to receptor and nonreceptor tyrosine kinases. Ras activation is regulated by the levels of bound GTP and GDP. Several effectors of Ras have been identified, including Raf1, PI 3-kinase and RIN1. RIN1 (Ras interaction/interference) was identified as a Ras-interacting protein in yeast, and it has been shown to bind to the human H-Ras. This RIN1-Ras interaction is enhanced when Ras is bound to GTP. Unlike Raf1, RIN1 is localized primarily to the plasma membrane. RIN1 contains an SH2 domain and an amino-terminal region similar to consensus SH3 domains. RIN1 binds c-Abl and, like Raf1, interacts with 14-3-3 proteins.

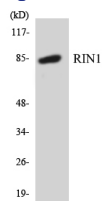
### Recommended Dilution

WB: 1: 500 - 1: 2000

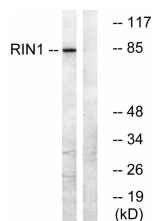
ELISA: 1: 40000

Not yet tested in other applications.

### Images



Western blot analysis of the lysates from COLO205 cells using RIN1 antibody.



Western blot analysis of lysates from K562 cells, using RIN1 Antibody. The lane on the right is blocked with the synthesized peptide.

## Storage

-20°C for one year

501 Changsheng S Rd, Nanhu Dist, Jiaxing, Zhejiang, China

Tel: 86 21 31007137 | E-mail: [save@bt-laboratory.com](mailto:save@bt-laboratory.com) | [www.bt-laboratory.com](http://www.bt-laboratory.com)