

RPL35 Polyclonal Antibody

Description

Product type	Primary Antibody
Code	BT-AP07911
Host	Rabbit
Isotype	IgG
Size	20ul, 50ul, 100ul
Immunogen	Synthesized peptide derived from human RPL35 Polyclonal
Mol wt	N/A
Species reactivity	Human, Mouse, Rat
Clonality	Polyclonal
Recommended application	WB, ELISA
Concentration	1 mg/ml
Full name	60S ribosomal protein L35
Synonyms	60S ribosomal protein L35; 60S ribosomal protein L35

This product is for research use only, not for use in human, therapeutic or diagnostic procedure.

Background

Ribosomes| the organelles that catalyze protein synthesis| consist of a small 40S subunit and a large 60S subunit. Together these subunits are composed of 4 RNA species and approximately 80 structurally distinct proteins. This gene encodes a ribosomal protein that is a component of the 60S subunit. The protein belongs to the L29P family of ribosomal proteins. It is located in the cytoplasm. As is typical for genes encoding ribosomal proteins| there are multiple processed pseudogenes of this gene dispersed through the genome.

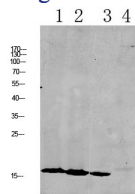
Recommended Dilution

WB: 1: 500 - 1: 2000

ELISA: 1: 10000 - 1: 20000

Not yet tested in other applications.

Images



1 mouse-lung
2 mouse-kidney
3 mouse-liver
4 CAC02

Western blot analysis of various lysate, antibody was diluted at 1000. Secondary antibody was diluted at 1:20000

Storage

-20°C for 1 year