

RNase Z2 Polyclonal Antibody

Description

Product type	Primary Antibody
Code	BT-AP07947
Host	Rabbit
Isotype	IgG
Size	20ul, 50ul, 100ul
Immunogen	The antiserum was produced against synthesized peptide derived from human ELAC2. AA range:161-210
Mol wt	92219
Species reactivity	Human
Clonality	Polyclonal
Recommended application	IHC-p, ELISA
Concentration	1 mg/ml
Full name	RNase Z2 Antibody
Synonyms	ELAC2; HPC2; Zinc phosphodiesterase ELAC protein 2; ElaC homolog protein 2; Heredity prostate cancer protein 2; Ribonuclease Z 2; RNase Z 2; tRNA 3 endonuclease 2; tRNase Z 2

This product is for research use only, not for use in human, therapeutic or diagnostic procedure.

Background

The protein encoded by ELAC2 (elaC ribonuclease Z 2) has a C-terminal domain with tRNA processing endoribonuclease activity, which catalyzes the removal of the 3' trailer from precursor tRNAs. The protein also interacts with activated Smad family member 2 (Smad2) and its nuclear partner forkhead box H1 (also known as FAST-1), and reduced expression can suppress transforming growth factor-beta induced growth arrest. Mutations in ELAC2 result in an increased risk of prostate cancer. Multiple transcript variants encoding different isoforms have been found for ELAC2.

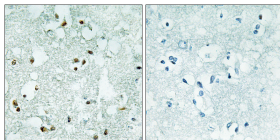
Recommended Dilution

IHC: 1: 100 - 1: 300

ELISA: 1: 10000

Not yet tested in other applications.

Images



Immunohistochemistry analysis of paraffin-embedded human brain, using ELAC2 Antibody. The picture on the right is blocked with the synthesized peptide.

Storage

-20°C for one year