

RREB1 Polyclonal Antibody

Description

Product type	Primary Antibody
Code	BT-AP08016
Host	Rabbit
Isotype	IgG
Size	20ul, 50ul, 100ul
Immunogen	The antiserum was produced against synthesized peptide derived from human RREB1. AA range:560-609
Mol wt	181420
Species reactivity	Human, Mouse
Clonality	Polyclonal
Recommended application	WB, IHC-p, ELISA
Concentration	1 mg/ml
Full name	RREB1 Antibody
Synonyms	RREB1; FINB; Ras-responsive element-binding protein 1; RREB-1; Finger protein in nuclear bodies; Raf-responsive zinc finger protein LZ321; Zinc finger motif enhancer-binding protein 1; Zep-1

This product is for research use only, not for use in human, therapeutic or diagnostic procedure.

Background

The protein encoded by RREB1 (ras responsive element binding protein 1) is a zinc finger transcription factor that binds to RAS-responsive elements (RREs) of gene promoters. It has been shown that the calcitonin gene promoter contains an RRE and that the encoded protein binds there and increases expression of calcitonin, which may be involved in Ras/Raf-mediated cell differentiation. Multiple transcript variants encoding several different isoforms have been found for RREB1.

Recommended Dilution

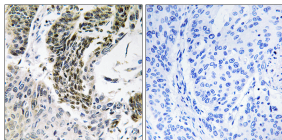
WB: 1: 500 - 1: 2000

IHC: 1: 100 - 1: 300

ELISA: 1: 20000

Not yet tested in other applications.

Images



Immunohistochemistry analysis of paraffin-embedded human lung carcinoma tissue, using RREB1 Antibody. The picture on the right is blocked with the synthesized peptide.

Storage

-20°C for one year