

RSK3 Polyclonal Antibody

Description

Product type	Primary Antibody
Code	BT-AP08036
Host	Rabbit
Isotype	IgG
Size	20ul, 50ul, 100ul
Immunogen	Synthetic peptide from human protein at AA range: 330-400
Mol wt	80630
Species reactivity	Human, Mouse
Clonality	Polyclonal
Recommended application	WB, ELISA
Concentration	1 mg/ml
Full name	RSK3 Antibody
Synonyms	RPS6KA2 MAPKAPK1C RSK3

This product is for research use only, not for use in human, therapeutic or diagnostic procedure.

Background

RPS6KA2 (ribosomal protein S6 kinase A2) encodes a member of the RSK (ribosomal S6 kinase) family of serine/threonine kinases. This kinase contains two non-identical kinase catalytic domains and phosphorylates various substrates, including members of the mitogen-activated kinase (MAPK) signalling pathway. The activity of this protein has been implicated in controlling cell growth and differentiation. Alternative splice variants, encoding different isoforms, have been characterized.

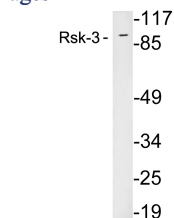
Recommended Dilution

WB: 1: 500 - 2000

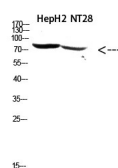
ELISA: 1: 10000 - 20000

Not yet tested in other applications.

Images



Western blot analysis of lysates from 293 cells, using Rsk-3 antibody.



Western Blot analysis of hepg2, NT28 cells using Antibody diluted at 500. Secondary antibody was diluted at 1:20000

Storage

-20°C for one year

501 Changsheng S Rd, Nanhu Dist, Jiaxing, Zhejiang, China

Tel: 86 21 31007137 | E-mail: save@bt-laboratory.com | www.bt-laboratory.com