

## Rsk-3 Polyclonal Antibody

### Description

Product type	Primary Antibody
Code	BT-AP08037
Host	Rabbit
Isotype	IgG
Size	20ul, 50ul, 100ul
Immunogen	The antiserum was produced against synthesized peptide derived from human S6K-alpha2. AA range:241-290
Mol wt	83239
Species reactivity	Human, Mouse
Clonality	Polyclonal
Recommended application	IHC-p, ELISA
Concentration	1 mg/ml
Full name	Rsk-3 Antibody
Synonyms	RPS6KA2; MAPKAPK1C; RSK3; Ribosomal protein S6 kinase alpha-2; S6K-alpha-2; 90 kDa ribosomal protein S6 kinase 2; p90-RSK 2; p90RSK2; MAP kinase-activated protein kinase 1c; MAPK-activated protein kin

This product is for research use only, not for use in human, therapeutic or diagnostic procedure.

### Background

RPS6KA2 (ribosomal protein S6 kinase A2) encodes a member of the RSK (ribosomal S6 kinase) family of serine/threonine kinases. This kinase contains two non-identical kinase catalytic domains and phosphorylates various substrates, including members of the mitogen-activated kinase (MAPK) signalling pathway. The activity of this protein has been implicated in controlling cell growth and differentiation. Alternative splice variants, encoding different isoforms, have been characterized.

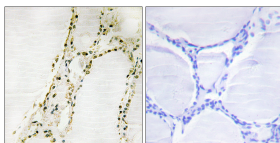
### Recommended Dilution

IHC: 1: 100 - 1: 300

ELISA: 1: 20000

Not yet tested in other applications.

### Images



Immunohistochemistry analysis of paraffin-embedded human thyroid gland tissue, using S6K-alpha2 Antibody. The picture on the right is blocked with the synthesized peptide.

### Storage

-20°C for one year