

## Cripto-3 Polyclonal Antibody

### Description

<b>Product type</b>	Primary Antibody
<b>Code</b>	BT-AP08105
<b>Host</b>	Rabbit
<b>Isotype</b>	IgG
<b>Size</b>	20ul, 50ul, 100ul
<b>Immunogen</b>	The antiserum was produced against synthesized peptide derived from the Internal region of human TDGF1P3. AA range:1-50
<b>Mol wt</b>	21181
<b>Species reactivity</b>	Human, Rat, Mouse
<b>Clonality</b>	Polyclonal
<b>Recommended application</b>	WB, ELISA
<b>Concentration</b>	1 mg/ml
<b>Full name</b>	Putative teratocarcinoma-derived growth factor 3
<b>Synonyms</b>	Putative teratocarcinoma-derived growth factor 3; TDGF1P3; CRIPTO3; TDGF2; TDGF3; Putative teratocarcinoma-derived growth factor 3; Cripto-3 growth factor; Epidermal growth factor-like cripto protein CR3; Teratocarcinoma-derived growth factor 1 pseudogene 3

**This product is for research use only, not for use in human, therapeutic or diagnostic procedure.**

### Background

The TDGF3 locus has characteristics of a retrotransposon, including lack of introns and a poly(A) sequence.

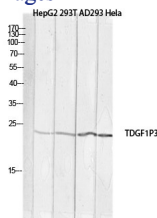
### Recommended Dilution

WB: 1: 500 - 1: 2000

ELISA: 1: 10000

Not yet tested in other applications.

### Images



Western blot analysis of HepG2 293T AD293 Hela lysis using TDGF1P3 antibody. Antibody was diluted at 1:1000. Secondary antibody was diluted at 1:20000

### Storage

-20°C for 1 year