

SCML2 Polyclonal Antibody

Description

Product type	Primary Antibody
Code	BT-AP08159
Host	Rabbit
Isotype	IgG
Size	20ul, 50ul, 100ul
Immunogen	Synthesized peptide derived from the Internal region of human SCML2.
Mol wt	77257
Species reactivity	Human
Clonality	Polyclonal
Recommended application	WB, ELISA
Concentration	1 mg/ml
Full name	SCML2 Antibody
Synonyms	SCML2; Sex comb on midleg-like protein 2

This product is for research use only, not for use in human, therapeutic or diagnostic procedure.

Background

SCML2 encodes a member of the Polycomb group proteins. These proteins form the Polycomb repressive complexes which are involved in transcriptional repression. The sex comb on midleg-like 2 binds histone peptides that are monomethylated at lysine residues and may be involved in regulating homeotic gene expression during development.

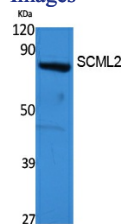
Recommended Dilution

WB: 1: 500 - 1: 2000

ELISA: 1: 20000

Not yet tested in other applications.

Images



Western Blot analysis of extracts from 293 cells, using SCML2 Polyclonal Antibody. Secondary antibody was diluted at 1:20000 cells nucleus.

Storage

-20°C for one year