

SFRS11 Polyclonal Antibody

Description

Product type	Primary Antibody
Code	BT-AP08244
Host	Rabbit
Isotype	IgG
Size	20ul, 50ul, 100ul
Immunogen	The antiserum was produced against synthesized peptide derived from human SFRS11. AA range:211-260
Mol wt	53542
Species reactivity	Human, Mouse
Clonality	Polyclonal
Recommended application	WB, ELISA
Concentration	1 mg/ml
Full name	SFRS11 Antibody
Synonyms	SRSF11; SFRS11; Serine/arginine-rich splicing factor 11; Arginine-rich 54 kDa nuclear protein; p54; Splicing factor; arginine/serine-rich 11

This product is for research use only, not for use in human, therapeutic or diagnostic procedure.

Background

SRSF11 (serine and arginine rich splicing factor 11) encodes 54-kD nuclear protein that contains an arginine/serine-rich region similar to segments found in pre-mRNA splicing factors. Although the function of this protein is not yet known, structure and immunolocalization data suggest that it may play a role in pre-mRNA processing. Alternative splicing results in multiple transcript variants encoding different proteins. In addition, a pseudogene of SRSF11 has been found on chromosome 12.

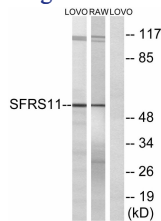
Recommended Dilution

WB: 1: 500 - 1: 2000

ELISA: 1: 10000

Not yet tested in other applications.

Images



Western blot analysis of lysates from LOVO and RAW264.7 cells, using SFRS11 Antibody. The lane on the right is blocked with the synthesized peptide.

Storage

-20°C for one year