

## SH3TC1 Polyclonal Antibody

### Description

<b>Product type</b>	Primary Antibody
<b>Code</b>	BT-AP08282
<b>Host</b>	Rabbit
<b>Isotype</b>	IgG
<b>Size</b>	20ul, 50ul, 100ul
<b>Immunogen</b>	The antiserum was produced against synthesized peptide derived from human SH3TC1. AA range:391-440
<b>Mol wt</b>	146929
<b>Species reactivity</b>	Human
<b>Clonality</b>	Polyclonal
<b>Recommended application</b>	WB, ELISA
<b>Concentration</b>	1 mg/ml
<b>Full name</b>	SH3TC1 Antibody
<b>Synonyms</b>	SH3TC1; SH3 domain and tetratricopeptide repeat-containing protein 1

This product is for research use only, not for use in human, therapeutic or diagnostic procedure.

### Background

SH3TC1 (SH3 Domain And Tetratricopeptide Repeats 1) is a Protein Coding gene. An important paralog of this gene is SH3TC2.

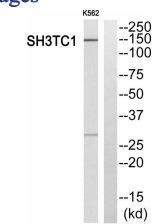
### Recommended Dilution

WB: 1: 500 - 1: 2000

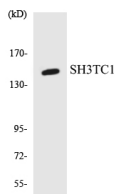
ELISA: 1: 10000

Not yet tested in other applications.

### Images



Western blot analysis of SH3TC1 Antibody. The lane on the right is blocked with the SH3TC1 peptide.



Western blot analysis of the lysates from RAW264.7 cells using SH3TC1 antibody.

### Storage

-20°C for one year