

## SIRT3 Polyclonal Antibody

### Description

Product type	Primary Antibody
Code	BT-AP08326
Host	Rabbit
Isotype	IgG
Size	20ul, 50ul, 100ul
Immunogen	The antiserum was produced against synthesized peptide derived from human SIRT3. AA range:350-399
Mol wt	43573
Species reactivity	Human
Clonality	Polyclonal
Recommended application	WB, ELISA
Concentration	1 mg/ml
Full name	SIRT3 Antibody
Synonyms	SIRT3; SIR2L3; NAD-dependent protein deacetylase sirtuin-3; mitochondrial; hSIRT3; Regulatory protein SIR2 homolog 3; SIR2-like protein 3

This product is for research use only, not for use in human, therapeutic or diagnostic procedure.

### Background

SIRT3 encodes a member of the sirtuin family of proteins, homologs to the yeast Sir2 protein. Members of the sirtuin family are characterized by a sirtuin core domain and grouped into four classes. The functions of human sirtuins have not yet been determined; however, yeast sirtuin proteins are known to regulate epigenetic gene silencing and suppress recombination of rDNA. Studies suggest that the human sirtuins may function as intracellular regulatory proteins with mono-ADP-ribosyltransferase activity. The sirtuin 3 encoded by SIRT3 is included in class I of the sirtuin family. Two alternatively spliced transcript variants that encode different proteins have been described for this gene.

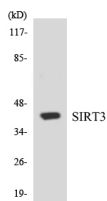
### Recommended Dilution

WB: 1: 500 - 1: 2000

ELISA: 1: 5000

Not yet tested in other applications.

### Images



Western blot analysis of the lysates from HepG2 cells using SIRT3 antibody.

### Storage

-20°C for one year